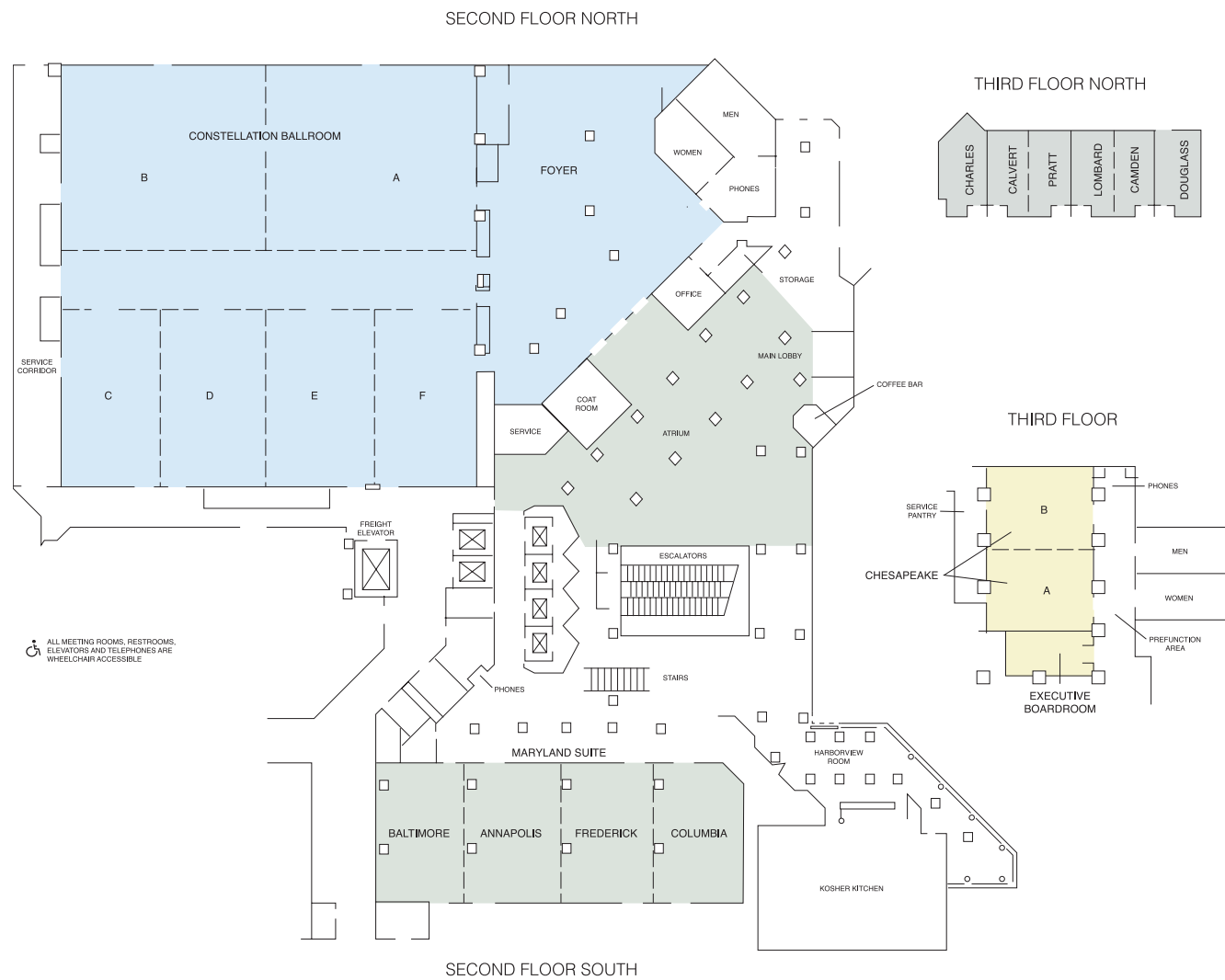


PLEASE NOTE: The outside cover folds into 4 sections on the last page to give attendees a map of the meeting space.



Finally
AVAILABLE

a Software Tool to...

- ◆ Enhance the Fundability of Your Grant Proposal
- ◆ Systematically Address Protocol Fidelity and Study Integrity

Stop by the Study360™ booth in the exhibitor hall for more information



Helping Researchers Help People.

www.almedtrac.com

877.240.3122

The
Research A-Team, LLC
We love it when your plans come together!

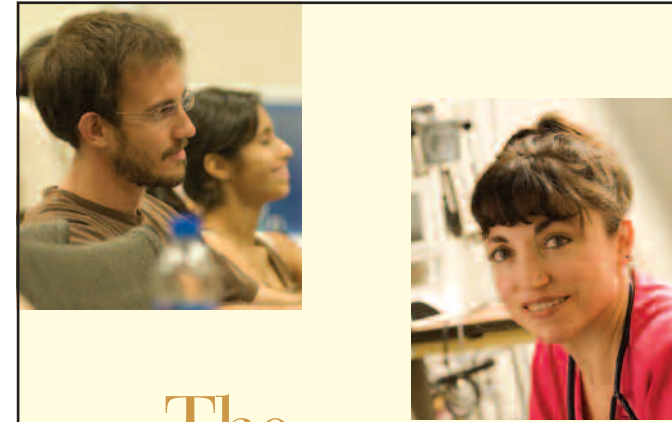
Research Proposal Camp

Need help in developing your ideas and/or the proposal for a federal research grant?

- Concentrated 4-day camp to help you sharpen your focus and specific aims, outline/sharpen the lit review, identify a conceptual framework, sell your prior work, and design the study.
- Small group setting with Dorothy Brooten, PhD, FAAN, & JoAnne Youngblut, PhD, FAAN.
- **Place:** Research A-Team home, Weston, FL
- **Dates:** May 18-21, 2009 OR June 8-11, 2009
- **Fee:** \$2000. Light breakfast & lunch included.

*Limit 6 registrants in each session *

Email us at: dbrooten@aol.com or drjmy3@aol.com



The
new face
of nursing at
Johns Hopkins

The Johns Hopkins University School of Nursing —A place where exceptional people discover possibilities that forever change their lives and the world. www.nursing.jhu.edu



JOHNS HOPKINS
UNIVERSITY

School of Nursing

■ 525 N. Wolfe St. ■ Baltimore, MD ■ 410.955.7548 ■

INTERDISCIPLINARY
RESEARCH: **A Road**
More or Less
Traveled



PROGRAM



Hosted by
University of Maryland School of Nursing
Johns Hopkins University School of Nursing
Towson University School of Nursing
West Virginia University School of Nursing
Catholic University School of Nursing

SNRS 2009 Conference

FEBRUARY 11-14, 2009 BALTIMORE, MARYLAND

Table of Contents



Local Planning and Program Committees	4
Welcome to 23rd Annual SNRS Conference	5
Keynote Speaker and Plenary Sessions	6
SNRS Board of Directors	9
Silent Auction	8
Schedule of Events	
Pre-Conference Workshops	10
Welcome/Keynote Address	11
State Liaison Luncheon Meeting	13
Special Open Dialog Session	17
Networking Sessions	17
RIG Meetings	17 and 22
Opening Reception	17
Funding Panel Breakfast	18
NINR One-on-One Consultations	17
Friday Plenary Session	18
Awards Luncheon	20
Dean's and Director's Meeting	22
Host Schools' Reception	22
Closing Plenary	26
2009 Conference Sponsors	27
Posters	
Student	28
General	38
2009 SNRS Award Winners	36
Exhibitors	39-42
Schedule at a Glance	inside back cover

Continuing Education Credits:

The University of Texas Health Science Center at San Antonio, School of Nursing, is an approved provider of continuing nursing education by the Texas Nurses Association, an accredited approver by the American Nurses Credentialing Center's Commission on Accreditation.

This education program offers up to 26 nursing contact hours.

SNRS On-site Registration Hours

Tuesday, February 10:	5:00 p.m. – 7:00 p.m.
Wednesday, February 11:	7:00 a.m. – 7:00 p.m.
Thursday, February 12:	7:00 a.m. – 5:30 p.m.
Friday, February 13:	7:00 a.m. – 5:30 p.m.
Saturday, February 14:	7:00 a.m. – 12:00 p.m.

Local Planning Committee Members

Kathryn Lothschuetz Montgomery, PhD, RN
(Local Planning Chair)
Associate Dean and Assistant Professor
University of Maryland

Jacquelyn Jordan, PhD, RN
Professor and Chair
Towson University

Nalini Jairath, PhD, RN
Dean and Associate Professor
The Catholic University of America

Hayley Mark, PhD, MPH, RN
Assistant Professor
Johns Hopkins University

Georgia L. Narsavage, PhD, CRNP, FAAN
Dean and Professor
West Virginia University
School of Nursing

Susan McCrone, PhD, APRN, BC
Professor and Chair
West Virginia University

Hae-Ra Han, PhD, RN
Assistant Professor
Johns Hopkins University

Cynthia Russell, PhD, RN
(SNRS Vice President)
Professor
University of Tennessee Health and Science Center, Memphis

Judy Breitenbach, MS, RN
Nursing Programs Director
Towson University

Kathi L. Pendleton, MS, RN, BC
Clinical Assistant Professor
Towson University at Hagerstown

Carolyn J. Yocom, PhD, RN, FAAN
Chair and Associate Professor
University of Maryland

Lyn Stankiewicz Murphy, PhD, MBA, MS, RN
Director of Professional Development and Assistant Professor
University of Maryland

Barbara A. Smith PhD, RN, FACS, FAAN
Associate Dean for Research and Professor
University of Maryland

SNRS Program Committee

Kathryn Lothschuetz Montgomery, PhD, RN
Associate Dean and Assistant Professor
University of Maryland

Cynthia Russell, PhD, RN
Professor
University of Tennessee Health Science Center, Memphis

Sharon Horner, PhD, RN
Professor
University of Texas - Austin

Anne Turner-Henson, DSN, RN
Professor
University of Alabama at Birmingham
School of Nursing

David Stumph, IOM, CAE
Executive Director
Southern Nursing Research Society

Ann Mehan Crosse
Associate Director
Southern Nursing Research Society

Rose Tierney-Gumaer
Professor and Director of Nursing
Continuing Education
University of Texas at San Antonio Health Science Center

Welcome to the 23rd Annual SNRS Conference



The SNRS Board and the Baltimore Local Planning Committee are pleased to present the program for the 23rd Annual SNRS Conference, "Interdisciplinary Research a Road More or Less Traveled". The Local Planning Committee is represented by five Schools of Nursing this year: University of Maryland, Johns Hopkins University, Catholic University, Towson University, and West Virginia University. Our consortium of LPC members worked to deliver this conference to you. Our vision is to provide a forum for a robust dialogue among colleagues on major research areas, create a forum to mentor and introduce the next generation researcher to the community of scholars and be enriched by the value of networking. In addition, Baltimore offers a unique opportunity for fun and entertainment. Baltimore is an exciting port city with history and beauty of an active harbor and growing cosmopolitan city. Baltimore is known for its charm, ethnic restaurants, and performing arts. Two of the biggest attractions in the downtown area are the National Aquarium and the Maryland Science Center. And for those that enjoy Italian food, "Little Italy" offers a mecca of restaurants.

We look forward to presenting stimulating research topics, rich with diverse content and opportunities to learn and expand your knowledge in areas of specialization both in methods and specialty areas, and challenges of interdisciplinary research.

A special thank you to all who served as reviewers and the many that supported the numerous aspects of planning and executing this annual meeting.

Highlights for 2009:

- Pre-conferences are planned to introduce you to new methods and approaches, in addition to the "tried and true" return of the publication pre-conference.
- The doctoral student pre-conference focuses on key topics for those individuals planning a research career. Fundamental decisions across the many milestones in the process of launching a research career will be addressed.
- This year's conference has been expanded to 3½ days
- Concentrating RIG content on one day and opportunities to network
- Special meetings to provide information and dialogue on major issues facing the SNRS professional organization
- NINR Program Directors One-on-One Consultations meetings – Sign up at Registration Desk
- Pre-conferences begin on Wednesday and include a SNRS Nominating Committee session on leadership of Professional Associations, offering networking with new board members and association membership
- Three Plenary Sessions that capture major issues for the membership
 - Thursday Keynote: sponsored by the Council for the Advancement of Nursing Science, Catherine Gilliss, DNSc, RN, FAAN
 - Friday: Mid-stream or Mid-career? A Dialogue about Career Efficacy
 - Saturday: Economic Factors Impacting on Nursing Research
- Silent Auction: take home special treasures to remember your alma mater or to get ready for your visit in 2010 in Austin.

The board wishes to thank everyone who contributed to formation of the annual conference.

Elaine Amella, PhD, APRN, FAAN, President, SNRS

Cynthia Russell, PhD, RN, Vice President, SNRS

**Kathryn Lothschuetz Montgomery, PhD, RN,
Local Program Committee Chair**

Keynote and Plenary Sessions

Keynote Address: Interdisciplinary Research: A Road More or Less Traveled

Speaker: Catherine L. Gilliss, DNSc,
RN, FAAN

Panel Members: Daniel E. Ford, MD,
MPH; Martha N. Hill, PhD, RN,
FAAN; Kathleen Knaf, PhD, MA

Interdisciplinary research is the theme for the 2009 meeting for the Southern Nursing Research Society's annual meeting in Baltimore, Maryland. In her keynote presentation, Catherine Gilliss will present the experiences of the nine CTSA funded academic health centers in the SNRS region, highlighting the enablers and barriers to successful interdisciplinary research.

Following her presentation, she has invited a selected group of participants from these centers to join her in a panel discussion on how to improve our ability to collaborate in interdisciplinary research. The panel discussion will be followed by dialogue with the audience; a dialogue we expect will be lively.

Catherine L. Gilliss, DNSc, RN, FAAN, is professor and dean of the Duke University School of Nursing and Duke Medicine's first vice chancellor for nursing affairs. Having earned her BSN degree in 1971 from Duke University, she is the first alumna in the School of Nursing's history to hold the position of dean.

Gilliss earned her MSN degree in 1974 from the Catholic University of America and her DNSc degree in 1983 from the University of California, San Francisco (UCSF). From 1998 until her arrival at Duke in 2004, she was professor and dean at the Yale University School of Nursing. During her tenure at Duke, the School has been among the nation's top 15 schools of nursing in US News and World Report rankings and NIH funding. Her scientific work and writing have been seminal to the study of the family within nursing.

Gilliss has authored over 70 peer-reviewed articles, 22 book chapters, and two books. As a leader, she has served as a regent of the University of Portland, president of the National Organization of Nurse Practitioner Faculties (NONPF), the Kappa Chapter of Sigma Theta Tau International Honor Society of Nursing, and chaired the National Institutes of Health/National Institute of Nursing Research, Nursing Sciences Review Committee. Beginning in 2009, she will assume the two-year presidency of the American Academy of Nursing.

Daniel E. Ford, MD, MPH is the David M. Levine Professor of Medicine and Psychiatry at Johns Hopkins University School of Medicine and the Director of the Johns Hopkins Institute for Clinical and Translational Research.

Martha N. Hill, PhD, RN, FAAN, is Dean of the School of Nursing and Professor of Nursing, Medicine, and Public Health at The Johns Hopkins University. She was President of the American Heart Association from 1997-1998; is a Fellow in the American Academy of Nursing; and a member of the Institute of Medicine (IOM) of the National Academy of Sciences.

Kathleen Knaf, PhD, MA, FAAN, is the Frances Hill Fox Distinguished Professor and Associate Dean for Research at the University of North Carolina – Chapel Hill School of Nursing. She serves as a consultant to the National Institutes of Health and is on the editorial boards of *Journal of Family Nursing*, *Research in Nursing and Health*, and *Nursing Outlook*.



Keynote and Plenary Sessions



Friday Plenary Session: Mid-stream or Mid-career? A Dialogue about Career Efficacy

Janet D. Allan, PhD, RN, FAAN; Mary K. Walker, PhD, RN, FAAN

Mid-career presents important challenges and opportunities for career efficacy and contribution. Former presidents of SNRS and academic leaders in nursing will describe the critical steps for faculty to take in moving through and beyond the mid career stage. This presentation is grounded in the reflections, key decisions, levels of professional contribution and scholarship that will shape future academic leadership. The dialogue is framed within the context of current realities and requirements for greater collaboration, partnership and interdisciplinary engagement.

Janet D. Allan, PhD, RN, FAAN, has been Dean of the University of Maryland School of Nursing since August 2002. She previously served as Dean and Professor at the University of Texas Health Science Center at San Antonio, School of Nursing from 1997-2002. Dr. Allan served as President of SNRS from 1992-1994.

Mary K. Walker, PhD, RN, FAAN, is a Professor and Dean of the Marcella Niehoff School of Nursing at Loyola University in Chicago, Illinois. She is a Past President of SNRS from 1994-1996, and currently serves as Director of Development on the SNRS Board of Directors.

Closing Plenary Session: The Dollar and Sense of Economics Interacting with Nursing

Speaker: Kevin Frick, PhD, Johns Hopkins University Bloomberg
School of Public Health

This presentation will address the advantages and challenges of involving economists in interdisciplinary health-related research. Dr. Frick will describe and discuss the policy relevance of concepts from microeconomic reasoning and economic evaluation, including cost-effectiveness. Economic implications and measures are essential to the value of research endeavors and the outcomes that they propose to confirm.

Kevin Frick, PhD, is an Associate Professor and Director of Interdepartmental Health Economics Program at the Johns Hopkins Bloomberg School of Public Health. He specializes in cost effectiveness research, particularly focusing on community-based interventions. He has collaborated with nurses on many projects including quality improvement, asthma interventions, and breastfeeding interventions. He acts as a consultant to the Center for Evidence-based Practice in the Underserved at the Columbia University School of Nursing, and has received small grant funding from the Center for Collaborative Intervention Research at the Johns Hopkins School of Nursing.

Silent Auction

Support Funding for Nursing Research

The primary mission of SNRS is to support nursing research. To that end, we are continuing, as part of our Annual Conference, a silent auction to generate funds for additional research grants.

Wednesday, February 11
7:00 a.m. – 7:00 p.m.

Drop off donated items at
Registration Desk.

Thursday, February 12
7:00 a.m. – 5:30 p.m.

Drop off donated items at
Registration Desk.

Friday, February 13
8:00 a.m. – 5:00 p.m.
6:00 p.m. – 8:00 p.m.

Silent Auction Bidding Open
Pick up items

Saturday, February 14
7:00 a.m. – 12:00 p.m.

Pick up Items

Board of Directors 2009 – 2010



President
Elaine Amella, PhD, APRN, FAAN
Medical University of South Carolina

Vice President
Anne Turner-Henson, DSN, RN
University of Alabama School of Nursing

Secretary
Mona Shattell, PhD, RN
University of North Carolina - Greensboro

President-elect
Marti Rice, PhD, RN
University of Alabama – Birmingham

Treasurer
Demetrius Porche, PhD, DNS, RN
Louisiana State University

At-Large Board Members

Director of Awards
Debra Moser, PhD, DNS, RN
University of Kentucky

Director of Membership
Deborah J. Jones, PhD, RN
University of Texas-Health Science Center

Director of Communications
Anne Stiles, PhD, RN
Texas Woman's University

Director of Research Interest Groups

Director of Development
Mary K. Walker, PhD, RN, FAAN
Loyola University – Chicago

Jennifer Wenzel, PhD, RN
Johns Hopkins University

Director of Grants
Cindy Munro, PhD, RN, ANP-C, FAAN
Virginia Commonwealth University

Executive Director
David Stumph, IOM, CAE

Associate Director
Ann Mehan Crosse

UF UNIVERSITY of FLORIDA

College of Nursing

The University of Florida is one of the nation's top twenty Association of American Universities (AAU) public research universities and the state's oldest and most comprehensive university.



CARE. LEAD. INSPIRE.

NURSING EDUCATION

Offering innovative program options in graduate study:
- Clinical Nurse Leader, Accelerated BSN to PhD, Doctor of Nursing Practice and PhD in Nursing Science including a PhD consortium to transmit classes via distance education to sites in North Florida

NURSING RESEARCH

The College is one of six in UF's comprehensive Health Science Center. UF College of Nursing faculty researchers collaborate with more than 40 other programs, institutes and centers of excellence located within UF. Many of our faculty researchers are federally funded.

NURSING OPPORTUNITIES

Come join our team of strong researchers, educators and clinicians! Visit our Web site for faculty career and doctoral student opportunities.

www.nursing.ufl.edu

Thank you to the 2008 – 2009 SNRS Board of Directors

President
Elaine Amella, PhD, APRN, FAAN
Medical University of South Carolina

President-elect
Marti Rice, PhD, RN
University of Alabama – Birmingham

Vice President
Cynthia Russell, PhD, RN
University of Tennessee Health Science Center

Secretary
Mona Shattell, PhD, RN
University of North Carolina - Greensboro

Treasurer
Carolyn Lewis, PhD, RN, CNE
Provo College

At-Large Board Members

Director of Awards
Cindy Munro, PhD, RN, ANP-C, FAAN
Virginia Commonwealth University

Director of Communications
Anne Stiles, PhD, RN
Texas Woman's University

Director of Development
Mary K. Walker, PhD, RN, FAAN
Loyola University – Chicago

Director of Membership
Martha Alligood, PhD, RN
East Carolina University

Director of Research
Jennifer Wenzel, PhD, RN
Johns Hopkins University

Executive Director
David Stumph, IOM, CAE
Associate Director

9:00 a.m. – 12:00 p.m.

Pre-Conference Workshops

W1A: Perish-Proof Publications for Researchers

FREDERICK/COLUMBIA
Barbara J. Holtzclaw, PhD, RN, FAAN; Kay Avant, PhD, RN, FAAN; and Janet Meininger, PhD, RN, FAAN

W1B: Introduction to Rasch Analysis: What is it and How Does it Help with Measurement?

BALTIMORE/ANNAPOLIS
Barbara Resnick, PhD, CRNP, FAAN, FAANP

10:00 a.m. – 10:15 a.m.

Refreshment Break

12:00 p.m. – 1:00 p.m.

Lunch on your own

1:00 p.m. – 3:30 p.m.

Pre-Conference Workshop:

W1C: Developmental Science as the Framework for Developmental and Health Trajectory Research Across the Lifespan.

FREDERICK/COLUMBIA
Diane Holditch-Davis, RN, PhD, FAAN and Margaret S. Miles, RN, PhD, FAAN

1:00 p.m. – 3:45 p.m.

Doctoral Student Pre-Conference Workshop:

W1D: Decisions and Milestones to a Research Career

CONSTELLATION A

1. “Doctoral Student Milestones,” a panel discussion with doctoral students and faculty will present factors to consider in the dissertation process:

Anne Belcher PhD, RN, FAAN, Haera Han, PhD, RN, Susan McCrone, PhD, RN, Sara Clutter, PhD(c), Susan Coyle, PhD(c)

2. The Value of Applying for a NSRA:

Barbara Smith, PhD, RN, FAAN, Jeri Allen, ScD, RN, FAAN, Luke Michaelson, MS, RN, Sarah Szanton, PhD, RN, CRNP

3. To Do or Not to Do a Post Doc:

Susan Dorsey, PhD, RN and Gayle Page, DNSc, RN, FAAN, Sharon Kozachik, PhD, RN

3:45 p.m. – 4:00 p.m.

Refreshment Break

4:00 p.m. – 5:00 p.m.

Special Session:

Succession Planning: The Next Generation of Professional Association Leadership

BALTIMORE/ANNAPOLIS
D. Patricia Gray, PhD, RN; David Stumph, IOM, CAE; Patricia Crane, PhD, RN, FAHA; Douglas Sutton, EdD, ARNP, NP-C; Kay Avant, PhD, RN, FAAN; S. Lee Ridner, PhD, FNP-BC; and SNRS Board Members.

5:00 p.m. – 6:00 p.m.

Dialog and Refreshments with Board and New Members



7:30 a.m. – 8:30 a.m.

Poster Session I Setup
TRELIS

7:30 a.m. – 8:30 a.m.

Continental Breakfast Exhibits Open

HARBORVIEW FOYER/TRIUM

8:30 a.m. – 8:45 a.m.

Welcome/Introductions by SNRS President

CONSTELLATION A/B

8:45 a.m. -9:45 a.m.

Keynote Address

CONSTELLATION A/B

Sponsored by the Council for the Advancement of Nursing Science

Speaker: Catherine L. Gilliss, DNSc, RN, FAAN, Dean and Professor, Duke University School of Nursing, Vice Chancellor for Nursing Affairs, Duke Medicine

Panel Members: Daniel E. Ford, MD, MPH; Martha N. Hill, PhD, RN, FAAN; Kathleen Knaff, PhD, MA, FAAN

9:45 a.m. – 10:00 a.m.

Refreshment Break/Networking/Exhibits Open

10:00 a.m. -11:30 a.m.

Session #1: Health Promotion: Smoking Cessation

ANNAPOLIS

An Academic Multi-Disciplinary Approach To Improving Tobacco Cessation Outcomes

Janie Heath, PhD

Advances with Tobacco Cessation: A Successful Nursing Faculty Practice Model

Sharon Bennett, DNP

Measuring Secondhand Smoke Exposure in Mother-Baby Couplets

Kristin Beth Ashford, PhD

College Student's Exposure to Tobacco Marketing in Smoke-Free Bars

S. Lee Ridner, PhD

Readiness for Smoke-Free Policy Development in Rural Communities

Ellen J. Hahn, DNS, RN

Session #2: Aging/Gerontology: Quality of Living

CONSTELLATION D

A Qualitative Examination of Southeastern Older Adults

Meredith Flood, PhD, MSN

Factors Associated With Sleep Disruption among Community Dwelling Elders in the Health and Retirement Study

Laura Lynn Williams, PhD(c), MSN, CRNP

Multi-Dimensional Mood Changes Following Exercise in Long Term Care Residents with AD

Christine L. Williams, DNSc, APRN, BC

Spirituality in Family Care Giving Skill at End of Life

Denise Miner-Williams, PhD

Session #3A: Parent/Child: Premature Infant and Special Needs Children

CONSTELLATION E

Body Temperature and Vasomotor Tone in Transitional ELBW Infants

Robin B. Knobel, PhD, RNC, NNP



Infant Dysregulation During Feeding

Lisa F. Brown, PhD

Variations in Care Practice and Discharge Timing in Preterm Infants

Charlene Krueger, PhD, ARNP

Working in a Teachers World: Nurses Caring for Children with Special Needs in School

Doreen Radjenovic, PhD, ARNP/PNP, CDE

Session #3B: Biobehavioral: Biomarkers and Self Management of Chronic Disease

CONSTELLATION F

Acanthosis and HOMA-Ir as Early Markers of Cardio Metabolic Risk among African-American Women

Susan J. Appel, PhD, APRN, BC, CCRN

WBC's in BC: Characterization of White Blood Cells as Bio-Markers in Breast Cancer

Julie Eggert, PhD, GNP, AOCN

Facilitators and Barriers to Self-Management of Type 2 Diabetes among Urban African American Adults: Focus Group Findings

Diane Orr Chlebowski, PhD, RN

Session #4: Aging/Gerontology: Caregiving

COLUMBIA

Predictors of African American Women's Perceived Health Status in the Context of Caring for a Relative

Dina Jo Byers, PhD

Caring for Caregivers: Evaluation of a State-Wide Program for Caregiver Education

Kathy Jo Ellison, DSN

The Experience of Urban Caregivers of Elders

Marie-Luise Friedmann, PhD, RN

Barriers to Medication Adherence in Older Women with CHD

Leanne L. Lefler, PhD, ACNS-BC, APN

The Rural Experience and Women's Health in Grand Mothering-Mothering

Elizabeth Ann Thomas, PhD, MPH, RNC

Session #5: Interdisciplinary Research

CONSTELLATION C

Symptom Clusters and Their Point Prevalence during the First Year after a Cancer Diagnosis in the Elderly

Sharon L. Kozachik, PhD

Negotiating Peace and Power in an Interdisciplinary Research Team

Charles A. Walker, PhD

An Interdisciplinary Review of Loneliness and Older Adults

Laurie Ann Theeke, PhD

Developing Health Promotion Interventions for Interdisciplinary Research Using Intervention Mapping

Anne Turner-Henson, DSN, RN

TNF Alpha and Interleukin 6 Predict Gestational Age at Birth and Preterm Birth

R. Jeanne Ruiz, PhD

Session #6: Symposium – Health Promotion from a Community Aspect

FREDERICK

Use of Discussion Boards in a Social Cognitive Theory-based Hip Fracture Prevention Website for Older Adults

Eun-Shim Nahm, PhD, RN

Effect of a Community-based Exercise Program on Quality of Life in Persons with Cancer

Barbara Haas, PhD, RN

Self Efficacy, Physical Activity, and Aerobic Fitness in Middle School Children: Examination of a Pedometer Intervention Program

Dana Manley, PhD

Promoting Health through Spirituality: Experiences of Mexican American Cancer Caregivers

Carolyn Spence Cagle, PhD, RNC

11:30 a.m. – 12:30 p.m. State Liaison Luncheon Meeting

BALTIMORE

11:30 a.m. – 1:30 p.m. Lunch on your own

12:30 p.m. – 1:30 p.m. Exhibits Open

HARBORVIEW FOYER/ATRIUM

Poster Session I with Authors

TRELLIS

1:30 p.m. – 3:00 p.m. Session #7:

Aging/Gerontology: Health Promotion/Quality of Life

CONSTELLATION C

Relationship of Self-Transcendence and Death Anxiety to Older Adult's Participation in Health Promotion Behavior

Dean Baker, PhD(c), RN

Assessing Nonverbal Communication Accuracy in Couples Living with Parkinson Disease compared to Matched Control Couples

Teresa Deshey-Longhi, DNSc

Experiences of Receiving Touch at End of Life

Marlaine C. Smith, PhD, RN

Quality of Life in Nursing Homes: What Does Happiness Have to do With It?

Mary Lynn Piven, PhD

Session #8: Parent/Child: Adolescent Issues and Child Development

CONSTELLATION D

Testing an Intervention to Prevent Risky Sex Behaviors in African-American Middle School-Aged Girls

Robin Bartlett, PhD, RN-BC

Domestic Homicides: The Children Left Behind

Barbara Parker, PhD, RN, FAAN

How Do You Feel About Seeing a Straight Doctor? Lesbian, Gay, Bisexual and Transgender Adolescents

Laura C. Hein, PhD, RN, NP-C

The Working Knowledge of Substance Abuse among High School Students in Jordan

Linda Haddad, PhD, RN



Effects of Child Gender and Mother-Child Interactions on Child Cognitive and Motor Development

June Cho, PhD

Session #9: Symposium – Interdisciplinary Research: International Perspective

CONSTELLATION E

Overview: Challenges and Strategies in the Conduct of International Interdisciplinary Research

Marie T. Nolan, PhD

Validation of Chinese Measure of Preferences for Involving Family in Healthcare Decision Making

Marie T. Nolan, PhD

Protecting Health Care Capacity in Sub-Saharan Africa by Preventing Occupational Transmission of HIV

Barbara A. Smith, PhD

An Intervention to Increase PEP Adherence in South Africa: Foundational Qualitative Work

Jacquelyn C. Campbell, PhD

Session #10: Symposium – Parent/Child: Challenges and Needs of Custodial Grandmothers

COLUMBIA

Overview: Challenges and Needs of Custodial Grandmothers

Margaret Miles, PhD, RN

“Give Me Some Sugar!” The Diabetes Self Management Activities of African American Primary Caregivers

Dana Carthron, PhD(c), RN

Intergenerational Parenting Challenges of African American Custodial Grandmothers

Margaret Miles, PhD, RN

Case Management Services for Custodial Grandparents

Lenora Campbell, DNS, RN

Information Need, Service Need, and Service Use: What are Their Relationships in African American Grandmothers

Gloria Carr, PhD

Session #11: Education: Student Success

CONSTELLATION F

A Three-Year Study of the School Nurse Preceptor Program for University Community Health Nursing

Donna Marie Kazemi, PhD, BSN

Peer Mentoring in the Nursing Skills Laboratory

Caralise Hunt, MSN

Navigating Barriers: An Assessment of Baccalaureate Student Success

Jennifer DM Cook, PhD, MBA, RN

Effects of Stress Resiliency and Psychological Empowerment on Nursing Student Success

Anne Young, EdD

Electronic Media and Communication among College Students: Frequency of Use and Relationships with Mental Health Indicators

Ruth R. Staten, PhD

Session #12: Health Promotion: College Student and Student Population

ANNAPOLIS

Father Participation in Assessment-Based Behavioral Parent Training for a Child with ADHD

Eileen Cormier, PhD, MSN

Smoke-Free Policies and Alcohol Use among College Students

Karen McBroom Butler, RN, DNP

Cardiovascular Risk Awareness among College Students

Laura Rodriguez Munoz, PhD, RNC, NNP

Comparison of 2001 and 2007 Survey of Physical Activity Assessment and Counseling Practices of Kentucky Advanced Registered Nurse Practitioners (ARNP)

Barbara Speck, PhD

Smoking and Drinking Rates among College Students Before and After a Smoke-Free Ordinance

Mary Kay Rayens, PhD

Session #13: Symposium – Aging/Gerontology: Aging and Risk

FREDERICK

Overview: Tailored Sleep Interventions for Older Adults

Karen Rose, PhD

Stability of Sleep Variables over One Year

Karen Rose, PhD

Sleep in Older Patients with Multiple Myeloma

Carol Enderline, PhD(c), MSN

Reliability of Polysomnography Data in Elders with Dementia

Melodee Harris, MSN, ANP, GNP-BC

3:00 p.m. – 3:30 p.m.

Refreshment Break/Networking/Exhibits Open

3:30 p.m. – 5:00 p.m.

Session #14: Education: Workforce Issues

CONSTELLATION D

Mission Possible: An Instructional CD for Preceptors

Ramona Browder Lazenby, EdD, CRNP

Challenges and Opportunities of Implementing A BSN to PhD Program: Initial Explorations

Mary Lou Bond, PhD

Department Matters: A Mixed Methods Examination of Workplace Violence against Nursing Personnel

Joan Ellen Kub, PhD, APRN, BC

The Relationships between Critical Thinking, Program Outcomes, and NCLEX-RN Performance in Baccalaureate Nursing Students

Janice Joyce Hoffman, PhD, RN, CCRN

Session #15: Symposium – Aging/Gerontology: Interdisciplinary Approaches to Understanding Dementia Care

COLUMBIA

Overview: Interdisciplinary Approaches to Understanding Dementia Care Needs

Karan Kverno, PhD, CRNP-PMH



Patterns and Treatment of Neuropsychiatric Symptoms in Advanced Dementia

Karan S. Kverno, PhD, CRNP-PMH

Understanding Dementia Patients' Prior Wishes for End-of-Life Care

Betty Black, PhD

Predictors of Quality of Life Ratings for Persons with Dementia Simultaneously Reported by Patients

Ann Morrison, PhD, RN

Session #16: Parent/Child: Premature Infant

ANNAPOLIS

Modifiable Risk Factors for Wheezing In African American Premature Infants

Jada L. Brooks, MSPH, RN

The Effect of Intraventricular Hemorrhages on Sleep-Wake States in Premature Infants

Heather E. Mann, MSN, NNP, CNS, RN

Agency as a Function of Becoming a Mother of a Medically Fragile Preterm Infant

Beth Perry Black, PhD, RN

Effects of a Cycled Light Intervention with Premature Infants on Maternal Adjustment

Debra Brandon, PhD

Session #17: Health Promotion: Cancer and Quality of Life

CONSTELLATION F

Factors Affecting Prostate Cancer Screening Decision-Making among African Americans

Randy A. Jones, PhD, RN

Factors Affecting Quality of Life in Persons on Hemodialysis

Daria L. Kring, PhD

Increasing Breast Cancer Screening by African American Women

Darlene Welsh, PhD

Transitoriness in Cancer Patients: Which Elements Are Key to a Successful Intervention

Maya Shaha, PhD

Session #18: Symposium – Aging/Gerontology: Measurement of Physical Activity in Older Adults: Challenges and Opportunities

CONSTELLATION C

Overview: Measurement of Physical Activity in Older Adults: Challenges and Opportunities

Elizabeth Galik, PhD, CRNP

Observed Measurement of Physical Activity for Older Adults in Long-Term Care Settings

Elizabeth Galik, PhD, RN

Measuring Step Activity after Stroke

Kathleen Michael, PhD, RN

A Multimodal Approach to Physical Activity Measurement in Older Adults

Barbara Resnick, PhD, CRNP

Session #19: Parent/Child: Maternal Well-being and Infants

CONSTELLATION E

Breastfeeding in African American Women

Lynne Porter Lewallen, PhD, RN, CNE

Parental Perceptions of Body Weight in Toddlers and Preschool Children

Dawn M. Garrett, PhD(c)

Predicting Maternal Health Practices: The Role of Family Relationships and Antenatal Attachment

Debra Cunningham Facello, PhD, RN

Maternal Psychological Well-Being and the Mother-Child Relationship Effects of the Nursing Support Intervention for African American Mothers

Diane Holditch-Davis, PhD, RN, FAAN

Maternal Adaptation in Women who's Babies are Diagnosed with a Genetic Anomaly or Birth Defect

Cindy M. Little, PhD

Special Open Dialog Session: Development and Giving: The Future of SNRS

*Mary Walker, PhD, RN, FAAN
Director of Development, SNRS*

Please stop in to hear and share your views on the development of a foundation for SNRS.

5:00 p.m. – 6:00 p.m.

Poster Session I Removal Concurrent Networking Sessions:

Meet the Editors

FREDERICK

SNRS Minority Researchers

COLUMBIA

Associate Deans of Research and Directors of Research Support Units

PISCES

RIG MEETINGS

Academic Nurse Managed Centers

DOUGLASS

Aging/Gerontology

BALTIMORE

Education

ANNAPOLIS

Health Promotion

CONSTELLATION D

Parent/Child

CONSTELLATION C

5:30 p.m.

Exhibits Close

6:00 p.m. – 7:30 p.m.

SNRS Opening Reception

CONSTELLATION A/B

6:30 p.m.

Dinner Meeting for RIG Chairs and Co-Chairs

OFFSITE

7:30 p.m.

DINNER ON YOUR OWN

NINR One-on-One Consultations

NINR Program Directors will be available on Friday February 13, 2009 from 11:00 a.m. to 5:00 p.m. for one-on-one consultations with SNRS attendees considering NINR grant application submissions. In order to participate in a one-on-one session attendees will need to sign up for an available time slot. Sign-up sheets will be available for each Program Director at NINR with designated time slots. The sign-up sheets will be available at the registration desk. This will be on a "First Come First Served" basis for 15 minute consultations.



7:00 a.m. – 8:00 a.m.

Poster Session II Setup

TRELLIS

7:30 a.m. – 8:30 a.m.

**Continental Breakfast
Exhibits Open**

HARBORVIEW FOYER/TRIUM

7:30 a.m. – 8:30 a.m.

Funding Panel Breakfast

CONSTELLATION E/F
American Nurses Foundation

National Institute of Nursing Research

Sigma Theta Tau

TriService Nursing Research Program

8:30 a.m. – 9:30 a.m.

**SNRS State of the
Organization Address and
General Business Meeting**

CONSTELLATION A/B

9:30 a.m. – 9:45 a.m.

**Refreshment Break/
Networking/ Exhibits Open**

HARBORVIEW FOYER/TRIUM

9:45 a.m. – 10:45 a.m.

**Plenary Session:
Mid-stream or Mid-
career? A Dialogue
about Career Efficacy**

CONSTELLATION A/B

*Janet Allan, PhD, RN, FAAN and Mary
Walker PhD, RN, FAAN*

10:45 a.m. – 11:00 a.m.

**Refreshment Break/
Networking/ Exhibits Open**

HARBORVIEW FOYER/TRIUM

11:00 a.m. – 1:45 p.m.

**NINR One-on-One
Consultations**

DOUGLASS

*Child and Family Health—Dr. Linda
Weglicki*

End of Life—*Dr. Josephine Boyington*

Health Disparities and Minority Health—
Dr. Paul Cotton

Neuroscience, Genetics and Symptom
Management—*Dr. Joan Wasserman*

11:00 a.m. – 12:30 p.m.

**Session #1: Psych/Mental
Health: Depression, PTSD,
And Substance Abuse**

COLUMBIA

**Effects of Depression and
Empowerment on Rural
Kentucky Youth**

Roni DeLao Kerns, PhD

**Health Status and Birth
Outcomes among Pregnant
Women in Substance Abuse
Treatment**

Benita Walton-Moss, DNS, APRN, BC

**Reaching Latina Mothers with
Depressive Symptoms Using
Nurse-Interpreter Teams In A
“New Destination”**

Immigration Area

Linda S. Beeber, PhD, APRN, BC

**Group Psychotherapy
Interventions for PTSD
Symptoms in Immigrant
Latina Women Who Have
Experienced Intimate Partner
Violence: A Pilot Study**

Ursula Kelly, PhD

**Mental Health Patients’
Experiences of Being
Misunderstood**

Laura M. Gaillard, BSN, RN

**Session #2: Minority
Health: Methods and
Instrumentation**

PRATT/CALVERT

**The Development and
Psychometric Analysis
of the Short-Form
Pulmonary Functional Status
Scale (PFSS-11)**

Georgia Narsavage, PhD, ANP-BC, FAAN

**Development and Testing of
the Spanish Nutritional
Literacy Scale**

Maren J. Coffman, PhD, RN

**Psychometric Analysis of the
Spanish Diabetes Knowledge
Test for Mexican Americans**

Nelda C. Martinez, PhD, RN

**Experiences of Discrimination
in Minority Women**

R. Jeanne Ruiz, PhD

**Unveiling the Various Methods
to Measuring Socioeconomic
Status (SES) among Minorities**

Tonya Moore, MSN

**Session #3: Symposium –
Education/Methods:
Building Interdisciplinary
Research Structures**

CHESAPEAKE A/B

**Overview: Building
Interdisciplinary Research
Structures**

Patricia Liehr, PhD, RN

**Building Interdisciplinary
Research Structures**

Patricia Liehr, PhD, RN

**Building a Structure for
Dissertation Research with
Mothers of III/Late Preterm
Infants**

Francesca Onyejuruwa, MSN, RN

**Building a Foundation for
Research with American
Veterans Returning from Iraq**

Lisa Marie Wands

**Building a Practice that
Enables Research with Women
who have Migraine Headaches**

Anthony Ramsey, MSN, RN, FNP

**Session #4: Education:
Culture**

ANNAPOLIS

**Developing Clinical Nurse
Scholars: Lessons Learned**

Charlene Pope, PhD, MPH

**Nursing Faculty Care
Expressions, Patterns, and
Practices Related to Teaching**

Sandra Jean Mixer, PhD, RN

**Self Assessments as a Tool in
Cultural Competence
Preparation**

*Juliana van Olphen Fehr, PhD, RN, CNM,
FACNM*

**Using Computer Technology
to Support Teaching
Laboratory Value Analysis**

Lisa Rinsdale, DNP, JD, ARNP, BC, CNE

**Factors Affecting the Career
Advancement of Black Women
Nursing Faculty**

Alfreda Harper-Harrison, EdD, MSN, CLNC

**Session #5: Health
Disparities: Methods**

FREDERICK

**Dimensions of Cultural
Competence: Nurse and Client
Perspectives**

Sharon S. Starr, PhD

**La Historia De Roberto: The
Use of Vignettes in Hispanic
Health Research**

Yolanda R. Davila, PhD

**Mexican American Women
with Chronic Pain: Trying to
Negotiate a Legitimate Identity
in the Healthcare System**

Diane Monsivais, PhD, CRRN, MSN



Community Advisory Boards to Guide Research: A Critical Synthesis of Best Practices

Jeannette O. Andrews, PhD, APRN, BC

Promoting the Cardiovascular and Mental Health of Economically Disadvantaged Women Hospitalized for ACS

Lene Symes, PhD, RN

Session #6: Minority Health: Chronic Illness

CAMDEN/LOMBARD

Type 2 Diabetes Risk among Asian Indians of Kerala Origin: Initial Study Results

Annie Thomas, PhD, RN

**“You Can Overcome This”:
Cancer Resource and Support Issues among Rural and Urban African American Elders**

Jennifer Wenzel, PhD, RN CCM

A Ukrainian Perspective of Caring Science

Gayle L. Casterline, PhD, RN, CNE

Familial Networks Among African American Transgender Women: Implications for HIV Prevention

Judith Bacchus Cornelius, PhD

Session #7: Chronic Illness: Cardiovascular Health

BALTIMORE

Changes in Psychosocial Distress in Heart Failure (HF) Outpatients with Implantable Cardioverter Defibrillators

Sue Thomas, PhD, RN

Employment Status and Attributes of COPD Patients

Mary Patricia Wall, PhD

Are Patients Working at 5 To 10 Years after Heart Transplantation?

Connie White-Williams, MSN

Time-Related Centile Ranges for Quality of Life Outcomes in Renal Transplantation

Katy Garth

Determining the Age of Bruises: What Does the Research Tell Us?

Katherine R. Nash, MSN, RN

12:30 p.m. – 1:45 p.m.

Awards Luncheon

CONSTELLATION A-F

- *Convention 2010: Invitation to Austin*
- *SNRS Small Grant Recipients*
- *SNRS D. Jean Wood Nursing Scholarship Award*
- *SNRS Award for Research in Minority Health*
- *SNRS John A. Hartford Foundation Geriatric Research Award*
- *SNRS Distinguished Researcher Award*

2:00 p.m. – 3:30 p.m.

Session #8: Minority Health Chronic Illness for Ethnically Diverse Populations

CHESAPEAKE A/B

Medication Adherences Mediates the Relationship between Ethnicity and Event-Free Survival in Patients with Heart Failure

Jia-Rong Wu, PhD

Psychosocial Stresses and Nighttime Blood Pressure Dipping in Black Women

Debra J. Barksdale, PhD, FNP-BC, FAANP

Stress-Resiliency Models: Biobehavioral Pathways of Risk and Resilience

Sarah L. Szanton, PhD, CRNP

Perceptions of Rural HIV+ African Americans about HIV Research and Clinical Trials

Margaret S. Miles, PhD, RN

Session #9: Chronic Illness

COLUMBIA

Assessing Collaborative Management in Asthma

Tracy Stephanie Estes, PhD, RN FNP

Exercise Adherences and Contamination in a Randomized Controlled Trial of Home-Based Walking Program among Patients Undergoing Active Cancer Treatment

JingJing Shang, MSN

Transitions from Rehabilitation to Home: A Feasibility Study

Kathleen Lucke, PhD

Functional Status and Depressive Symptoms in African American Women with Diabetes

Janice Collins-McNeil, PhD, APRN, BC

Development and Testing of a Measure of Acculturation that is Useful Across Cultural Groups

Ruth M. Tappen, EdD, RN, FAAN

Session #10: Adult Health: Caring for Cardiovascular Health

ANNAPOLIS

Pumping Hard and Fast: Fatigue and Biomechanical Changes During Cardiopulmonary Resuscitation

Carolyn L. Cason, PhD, RN

Coping in Post-MI Patients and Spouses/Companions at Risk for Sudden Cardiac Death

Laurie Rockelli, PhD, RN, PMHCNS-BC

The Impact of Incontinence Experiential Learning

Karen Karlowicz, EdD, RN

Session #11: End of Life: Care Giving

BALTIMORE

Using Drama to Enhance Understanding of Ethical Issues in Alzheimer's disease

Pamela R. Cangelosi, PhD

The Influence of Ruralty, Socioeconomic Factors and the Availability of Physicians on the Presence of a Medicare-Certified Hospice in Rural Communities

Cathy Levon Campbell, PhD

A Nurse's Study of the Dying Patient and His Family

Joy Buck, PhD, RN

End-of-Life Informal Care-Giving and Decision-Making Experiences among Blacks

Norma Evelyn Conner, PhD

Session #12: Acute Illness: Pre- and Post-Operative Care

FREDERICK

A Preliminary View: Effects of Preoperative Warming on Surgical Stress

Doreen Wagner, PhD, RN

The Association of BMI and Braden Total Score with the Occurrence of Pressure Ulcers

Daniel James Drake, MSN, CBN, RN

Effect of a Local Anesthetic Infusion on Cardiac Surgery Outcomes

Malinda Langley, PhD(c)

Can Non-Invasive Acupuncture Reduce Patients' Needle-Anxiety?

Kyungeh An, PhD

Session #13: Chronic Illness/Diabetes

PRATT/CALVERT

Describing Vulnerability in Nursing Center Patients with Type 2 Diabetes

Kathryn Fandt, DNS

Pilot Test of a Home-Based Diabetes Symptom Self-Management Intervention for Mexican Americans

Alexandra A. Garcia, PhD, RN

Educational Interests about Urinary Incontinence among Diabetic and Non-Diabetic Heart Failure Patients

Shelley Yerger Hawkins, DSN, FNP-BC, GNP-BC, FAANP

Knowledge of Heart Disease Risk Among Adults with Type 2 Diabetes

Elizabeth Gressle Tovar, PhD, ARNP

2:00 p.m. – 3:30 p.m.

School of Nursing Deans' and Directors' Meeting

CAMDEN/LOMBARD

2:00 p.m. – 4:45 p.m.

NINR One-on-One Consultations

DOUGLASS

Critical Care, Cardiovascular, Pulmonary, Caregiving—*Dr. Karen Huss*

Immunology, Infectious Disease and Complex Disorders—*Dr. Jeanette Hosseini*

Immunology, Infectious Disease and Complex Disorders—*Dr. Kathleen Jett*

Training Coordinator (F-Series, T-Series)—
Dr. David Banks

3:30 p.m. – 3:45 p.m.

Refreshment Break/Networking/Exhibits Open

HARBORVIEW FOYER/TRIUM

3:30 p.m. – 4:30 p.m.

Poster Session II with Authors

TRELLIS

4:30 p.m. – 5:30 p.m.

RIG MEETINGS

Biobehavioral

PISCES

Community and Public Health

PRATT/CALVERT

Ethics

CHESAPEAKE B

Evidence-based Practice

CAMDEN/LOMBARD

Minority Health

ANNAPOLIS

Psychiatric Mental Health

CHESAPEAKE A

Psychometric Instrumentation

COLUMBIA

Qualitative

FREDERICK

Researchers in Clinical Setting

BALTIMORE

5:00 p.m. – 5:30 p.m.

Poster Session II Removal

TRELLIS

5:30 p.m.

Exhibits Close

5:30 p.m. – 7:00 p.m.

Host Schools' Reception

CONSTELLATION A/B

7:00 p.m.

Dinner on Your Own



7:30 a.m. – 8:00 a.m.

Poster Session III Setup

TRELLIS

7:30 a.m. – 8:30 a.m.

Continental Breakfast Exhibits Open

HARBORVIEW FOYER/TRIUM

8:30 a.m. – 10:00 a.m.

Session #1: Acute Illness: Self Management and Stress

CONSTELLATION D

Theory-Based Interventions for Low-Sodium Diet Self-Management in Heart Failure

Darlene Welsh, PhD

Examining Levels of Persistent Fatigue in Older Adults after Myocardial Infarction

Patricia B. Crane, PhD, RN, FAHA

The Effects of Correction Insulin and Basal Insulin on Inpatient Glycemic Control

Elizabeth Ruth Van Horn, PhD, RN, CCRN

The Experience of Stress for Open Heart Surgery Patients

Lois Robley, PhD

Linking Practice-Based Knowledge with a Nursing Conceptual Framework to Guide Care Coordination Interventions for Families of Children with Special Needs

Katherine Robinson, PhD, RN

Session #2: Qualitative Methods

CONSTELLATION C

The Social Context of Prostitution

Lyn Stankiewicz Murphy, PhD, MS, MBA, RN

Patient Controls, Ethnicity, and End-of-Life Care

Debbie Volker, PhD

A Model for International, Interdisciplinary Research Mentoring

Alvita Kay Nathaniel, PhD

Home as Domain for Healing: A Call for a Theoretical Perspective

Elaine S. Marshall, PhD

Implications for Success with Focus Groups as a Research Methodology

Wanda Kearns Lawrence, PhD

Session #3: Women's Health: Issues across the Lifespan

COLUMBIA

The Relationship between Type of Menopause, Body Mass Index, and Abnormal Glucose Metabolism

Sharon L. Dormire, PhD, RN

Obesity on Vagal Tone, Hba1c and Oxygenation

Rebecca Jo Helmreich, PhD(c)

Characteristics of Rural Appalachian Women Who are Rarely or Never Screened for Cervical Cancer

Jenna Hatcher, PhD, RN

Have We Lost Sight of the Mirrors?

Wyona Freysteinson, MSN

What Women Want from Health Care Providers about HPV

Susan Porterfield, PhD, FNP-C



**Session #4:
Symposium —
Psychometrics
Instrumentation**
CONSTELLATION E

**Overview: Psychometric
Assessment of Measures Used
with Vulnerable Populations**
Ann Penden, DSN, BS

**Psychometric Properties of the
Everyday Stressors Index in
Low-income Single Mothers**
Lynne Hall, DrPH, RN

**Evaluating the Psychometric
Properties of a Negative
Thinking Instrument in
Patients with Heart Failure**
Rebecca Dekker, MSN, RN

**Psychometric Evaluation of
the John Henryism Active
Coping Scale in Older
Farmers**
Jenna Hatcher, PhD, RN

**Session #5: Symposium —
Community Public
Health/Work Schedules
for Nurses**
ANNAPOLIS

**Overview: “Work Schedules in
Nurses, Short-Term Outcomes
and Mechanisms of Effect”**
Alison Trinkoff, ScD

**Needle Stick Injuries and
Work Schedules in Registered
Nurses**
Alison Trinkoff, ScD

**Restless and Inadequate Sleep
in RNs; Work Schedules and
Work Demands both Related
to Sleep Outcome**
Jeanne Geiger-Brown, PhD

**Characterizing Work
Schedules of Nurses Using
Three Approaches**
Jeanne Geiger-Brown, PhD

**Session #6: Evidence
Based Practice Research —
Hospital Organization**
CONSTELLATION F

**High Quality of Care —
Greater Shared Vision and
Lower Isolation in Rural
Hospitals**
Robin Purdy Newhouse, PhD

**Implementation of a
Medication Management
Evidence-Based Practice in a
Community Mental Health
Setting**
Patricia B. Howard, PhD, RN

**Analysis of Serendipitous
Qualitative Data Related to
Job Strain**
Diane Randall Andrews, PhD, RN

**Magnet Hospital Chief
Nursing Officer Autonomy**
Yolanda Keys, DHA

**Integrating EBP into
Professional Practice of a
Community Hospital: Active
Learning and Immersion**
Kathryn Lothschuetz Montgomery, PhD, RN

**Session #7: Symposium —
Circumventing Recruitment
Potholes: Recruitment of
Diverse Elders**
FREDERICK

**Overview: Circumventing
Recruitment Potholes**
Elaine Souder, PhD

**Going the Distance:
Longitudinal Recruitment and
Retention**
Jean McSweeney, PhD

**Enhancing Minority
Recruitment: Developing Lay
Educator Liaisons**
Elaine Souder, PhD

**Ten Commandments of Faith-
Based Recruiting**
Leanne Lefler, PhD, APN, CCRN

**Enrolling Elders with
Cognitive Impairment:
Lessons from the Trenches**
Pao-Feng Tsai, PhD, RN

10:00 a.m. – 10:15 a.m.
**Refreshment Break/
Networking/**
HARBORVIEW FOYER/TRIUM

10:00 a.m. - 11:00 a.m.
**Poster Session
III with Authors**
TRELIS

Exhibits Open
HARBORVIEW FOYER/TRIUM

11:00 a.m. – 12:30 p.m.
**Session #8:
Psychometrics/
Instrumentation**
ANNAPOLIS

**The Consumer Emergency
Care Satisfaction Scale:
A Re-Evaluation**
Barbara A. Davis, PhD

**Development of the Register -
Connectedness Scale for Older
Adults: A Study of Reliability
and Validity**
*Mary Elizabeth Register, PhD, RN, MPH,
CCM, BC*

**Responsiveness to Child
Feeding Cues: An
Observational Scale**
Eric Ashworth Hodges, PhD

**Relationship of Abuse,
Silencing and Health
Outcomes-A Pilot Study for
Instrument Development and
Testing**
Anne Floyd Koci, PhD, FNP-BC

**Session #9: Symposium —
Home Care Work
Environment: Research
Describes Hazards, Points
to Policy Solution**
FREDERICK

**Overview: The Home Care
Work Environment: Research
Describes Hazards, Points to
Policy Solutions**
Jane Lipscomb, PhD

**Blood and Sharps Exposure in
Home Care: Comparing RN's
and Personal Care Assistants**
Jane Lipscomb, PhD

**Needle Stick Policies and
Practices in Home Care and
Hospice Agencies in Maryland**
Barbara Schraf, PhD

**Home Care RNs' Perception of
their Work Environment**
Paxson Barker, BSN, RN

**Session #10: Women's
Health: Cancer,
Myocardial Infarction, HIV**
COLUMBIA

**Voices of Women with Ovarian
Cancer: Traveling Down the
Road of Research Trials to
Access Care**
Sandra K. Cesario, PhD, RNC

**Recovery of Midlife Women
from Myocardial Infarction**
Sherri Stevens, PhD, RN

**Pap Smear Rates: Predictor of
Cervical Cancer Mortality
Disparity?**
Ruby Shaw Morrison, DSN, RN



A View of the Lives of Women with HIV/AIDS Living in the Rural Southeastern United States

Kenneth D. Phillips, PhD

Session #11: Women's Health: Health Promotion of Mothers and in Pregnancy

CONSTELLATION F

Immigrant Women's Health Promotion Behaviors

Luba Louise Ivanov, DNS

Dietary Qualities in the First Trimester of Pregnancy: A Pilot Study

Eileen Fowles, PhD, RN-C

Obstetrical Lacerations in Rural Hospitals

Meg Johantgen, PhD, RN

A Descriptive Comparative Study of Maternal Risk, Maternal-Fetal Medicine Services, Delivery and Birth Outcomes for High-Risk Pregnant Rural Women: A Pilot Study

JoEllen Margaret McDonough, PhD

Maternal Role Barriers and Perceived Needs of Mothers Receiving Hemodialysis for End-Stage Renal Disease

Kimya D. Nance, PhD(c)

Session #12: Workforce Issues: Emergency Response and Professional Contribution and Development

CONSTELLATION E

An Assessment of the Quality and Timeliness of Vital Signs Data during a Multi-Phase EMR Project

Marilyn J. Schaffner, PhD

The Experience of Deciding to Volunteer for Hurricane Katrina Relief

Deborah Luzton Ulmer, PhD

Reasons Nurses May Respond or Not Respond to a Bioterrorism Event

Elnora P. Mendias, PhD, RN, FNP-BC

Effects of System Interventions on Documentation of Patient Teaching

Ruby Shaw Morrison, DSN

**11:00 a.m. – 1:00 p.m.
Exhibits/Poster Session III
Removal**

12:30 p.m. – 1:30 p.m.

Closing Plenary: The Dollar and Sense of Economics Interacting with Nursing

CONSTELLATION A/B

Speaker:
Kevin Frick,
PhD, Johns
Hopkins
University
Bloomberg
School of
Public
Health



Dr. Frick will reflect on a decade of research as an economist collaborating with nurse researchers and other interdisciplinary teams. His presentation will address the advantages and challenges of involving economists in interdisciplinary health-related research. He will describe and discuss the policy relevance of concepts from microeconomic reasoning and economic evaluation, including cost-effectiveness. Economic implications and measures are essential to the value of research endeavors and the outcomes that they propose to confirm.

Thank you! SNRS would like to thank the following Sponsors for their support of the 23rd Annual Conference

Johns Hopkins University School of Nursing

Tote Bag Sponsor

Council for the Advancement of Nursing Science (CANS)

Keynote Address Sponsor

Special Thanks to our Host Schools and their sponsorship of the Host School Reception:

**Catholic University of America
School of Nursing**

**Johns Hopkins University
School of Nursing**

**The University of Maryland
School of Nursing**

**Towson University
Department of Nursing**

**West Virginia University
School of Nursing**

SNRS Student Posters

Thursday, February 12, 2009



Advanced Educations of Nursing Assistants

Nancy Lerner

Night-to-Night Variability of Arterial Oxygenation During Sleep Among Community-Dwelling Elders, Age 70 Years and Older

Benjamas Suksatit

Participation in Physical Activity in Older African American Women

Willie Mae Abel

A Meta Analysis of Studies of Job Satisfaction among Nursing Assistants in Nursing Homes

Jisun Choi

Computer-Mediated Connectedness in Older Adults: A Conceptual Framework

Susan L. Gatto

Interdisciplinary Solutions in Elder Care: Drug-Related Problems in an Adult Day Care and Senior Citizen Center

Allison H. Burfield

"There is a Hole in My Heart": An Explanatory Model of Myocardial Infarction in Older Women

Mary J. Griffin

The Use of Skin Cleansers in the Adult Medical Surgical Population: A Review of Literature

Susan Moses

Exploring Certified Nursing Assistants' Reasons for Remaining in Long-Term Care: A Pilot Study

Judy M. LaBonte

Utilizing the Personhood Model for Dementia Care to Identify and Organize Person-Centered Care Interventions

Bill Buron

HIV Knowledge, Self-Efficacy and At-Risk Behaviors in Older Adults

Victoria Foster

An Examination of Insulin Usage in Older Adults with Diabetes

Jacqueline M. LaManna

The Relationship of Body Composition with Quality of Life in Patients with Heart Failure

Kyoung Suk Lee

Understanding Sleep, Depression, Stress and Immunity in Dementia Caregivers

Brandy Lehman

Promoting Successful Gerontological Nursing Research Through Innovative Mentoring Strategies

Melodee Lee Harris

Factors Influencing Undergraduate Nursing Students Intentions to Integrate Tobacco Cessation in Daily Practice

Sandra B. Inglett

Effects of NLN Core Competencies of Nurse Educators and the CNE Credential

Gloria Waters Baker

Pain Assessment and Management Competencies

Leslie Ann Curry

The Effects of an Evidence-based Intervention on Stress and Coping of Families of Critically Ill Trauma Patients

Sandra Jeanne Knapp

Using Service Learning Strategies to Teach Essential Professional Nursing Values: A Randomized Controlled Trial

Debra L. Fowler

Historical Study of 50+ Years of American Nurses Foundation Scholars

Patricia Ruth Messmer

Concept Analysis: Individual Expectations Related to Pain Management

Jeanne Brown Jenkins

A Qualitative Study of Nursing and Nursing Education in Ghana

Ramona B. Patterson

A Nurse's Guide to the Interdisciplinary Development of Web-based Health Learning Modules

Mary DeGrazia

The 6 C's of Online Learning: Perspectives from a Doctoral Cohort

Leslie Parker

Comparison of HIV Knowledge and Attitudes among Nursing Students in Honduras and the U.S.

Larry Zuendel Slater

Using Evidence to Teach Information Technology and Information Literacy: A Multidisciplinary Approach

Heather D. Carter-Templeton

The STAIRS Model of Socialization for Doctoral Students

Robin Dianna Lockhart

The History of Associate Degree Nursing: Why? How? and What Happened?

April Denise Matthias

Compassionate Care: A Focus on Dying Well

Gayle McGlory

Structuring Uncertainty During the Breast Diagnostic Period: State of the Science

Mariann M. Montgomery

Examining the Health Beliefs and Behaviors of Women with Previous Gestational Diabetes Mellitus

Emily J. Jones

Cognitive Appraisal of Perceived Threat of Diabetes and Adherence to Self-Management Behaviors

Roger Carpenter

Physical Therapy and Chiropractic Use in Adult Survivors of Childhood Cancer: Impact on Health-Related Quality of Life

Michele Montgomery

Depressive Symptoms are Important Correlates of Dietary Energy Density in Overweight Adults

Daurice A. Grossniklaus

Acupressure for Chronic Pain in Older Adults: A Pilot Study

Kimberly Ward

The Concept of Partnership within the Nurse-Patient Relationship

Cathy Roche

Application of the Transtheoretical Model and BP Control in Hypertensive African American Workers

Tonya Breaux-Shropshire

Identification of Chronic Kidney Disease

Loretta Jackson Brown

Perceptions of Cardiac Risk Factors and Risk Reduction Behavior in Women with Known Coronary Heart Disease

Leslie Moore

Spirituality and Quality of Life in Heart Failure Patients

Mary H. Wilson

Attending to Shame and Hopelessness in People with Human Papilloma Virus (HPV)

Crystal Gail Sheaves

Variables Associated with Folic Acid Intake in North Carolina College Students

Annette Baker Hines

Reducing Metabolic Syndrome (MS) Risk Factors in HIV-infected and Non-infected Adults: A Comparison of Two Databases

Joon Ho Park

A Research Proposal about Dysmenorrhea, Self-Care Strategies, and Related Factors in Taiwanese Adolescent Girls

I-Chen Lu

The Development and Implementation of a System-Based Physical Activity Promotion Program for a Rural, Primary Care Population

Martha Ellen Summers

Psychometrics of the Patient Health Questionnaire for the Measurement of Depressive Symptoms in Patients with Heart Failure

Muna Hammash

Understanding Cervical Cancer Screening Delay in Army Women

Meryia D. Throop

SNRS Student Posters Thursday, February 12, 2009

Homeless Sheltered Women's
Health Promotion Behaviors
Frankie Ballard

Everyday Stress, Social Support,
and Health-related Quality of
Life of Mothers
Susan Coyle

Family Members' Perceptions of
Sibling Relationships after a
Major Pediatric Burn Injury
Carlee Lehna

Screening for Depression During
Pregnancy
Jodi Protokowicz

Developmentally Supportive
Care: Training Program for
Nurses Working in the NICU
Heba Ezzat Kamhawy

Changes in Family Variables
among Normal and Overweight
PreSchoolers
Philsie Washington

Heart Rate Variability as an
Indicator of Physiologic Stability
During Gentle, Cue-based
Feeding in the Preterm Infant
Britt Frisk Pados

Multagency Interdisciplinary
Mass Casualty Education for
Baccalaureate Nursing Students
Benjamin Labovitz

Preparation for Transitioning
Adolescents with Epilepsy and
Cognitive Impairments from
Pediatric to Adult Health Care:
Parental Experiences
Rebecca J. Schultz

Adolescent Impulsivity and
Reward-Seeking: Linking
Neurobiology to Adolescent
Risk Behaviors
Mary Ann Cazzell

Maternal Competence and
Responsiveness in Mothers of
Late Preterm Infants
Brend J. Baker

An Examination of Maternal
Sleep, Depressive Symptoms,
and Inflammation and their
Association with Preterm Birth
Morgan E. Bonner

Evaluating a Practice Initiative:
ProLacta as a Nutritional
Supplement for Preterm, Low-

birth Weight Infants
Karen Lynne Wright

Evaluating a New Instrument to
Parental Caregiver Burden
Jerithea Doronice Tidwell

Maternal Voice, Family
Visitation and Discharge Timing
in Preterm Infants
Jillian Jenna Cimino

The Influence of Five-Minute
APGAR Scores and Birth Weight
Category on NICU Survival at
28 Days of Life
Sara Rosenthal

Salutogenesis: A Conceptual
Analysis of Health in Nurse-
Midwifery Practice
Mary Jane Lewitt

State of the Science: The Effect
of Childhood Cancer-Related
Fatigue on the Family Unit
Tina Antillf

Concept Analysis of Intrusive
and Helpful Directive Behavior
of Mothers with their Toddlers
Jamie Leigh Rogers

Effect of Breast Milk on Cost of
Care in Very Low Birth Weight
Infants
Christina Stewart

The Effect of Breast Milk
Feedings in Very Low Birth
Weight Infants on Feeding
Intolerance
Lisa Frier

Effect of Human Milk Feedings
on the Length of Hospital Stay in
Very Low Birth Weight Infants
Justine Harris

Obesity and Asthma
Medications in Preschool
Children
Cynthia Irwin Jainer

Psychometric Evaluation of the
English and Spanish Versions of
the Spiritual Coping Strategies
Scale
Dawn Marie Hawthorne

The Need for Community-based
NP Run Health Care Centers to
Improve the Cardiovascular Risk
Factors of the Medically
Underserved
Sharyn Neiman Conrad

SNRS Student Posters Friday, February 13, 2009



A Literature Review Supporting
Massage Therapy as a Potential
Intervention for Stress Reduction
in Women at Risk for Breast and
Ovarian Cancer
Paula Thomas Ruffin

Effects of Guided Imagery on
Symptoms, Function, and
Psychological Factors in
Fibromyalgia: A Literature
Review
Shannon L. Riedel

The Relationship among
Undergraduates' Mental Health
and Demographics, Life
Satisfaction, and Coping
Strategies
Jihan Saber Raja Mahmoud

Comparison of Manual 12-lead
Electrocardiogram Analysis and
Computerized Holter Analysis of
QT Interval Duration in
Overweight-Obese Youth:
A Pilot Study
Shirleatha Taylor Lee

Immune Effects of Cigarette
Smoke: Using Immune Cells in a
Bench Science Approach
Alison Montpetit

Fetal Response to
Recurrent Maternal Speech:
A Longitudinal View
Ingrid Lorraine Keller

Relationship of Anger Trait and
Anger Expression to C-Reactive
Protein in Post-Menopausal
Women
Rosalyn Gross

Group Cognitive-Behavioral
Therapy for Chronic Pain
Management: Assessing
Adherence to Protocol
Susan Gaskins

Individualism: Implications for
the Genomic and Tailored-
Therapy Era
Leslee D'Amato-Kubiet

Meeting the Needs of
Vulnerable Populations: The
MHIRT Scholars Adapting
Insights from Europe
Alexa Cintron

The Relationship of Obstructive
Sleep Apnea and Sickle Cell
Disease Severity in Children
Valerie E. Rogers

Differences in Cardiac Risk
Factors between Obese and
Normal Weight Women
Queen Henry-Okator

Obesity: A Concept Analysis
Winsome Beverly Stephenson

An Evaluation of the Use of
Aripiprazole Compared to
Risperidone in the Treatment of
Disruptive Behavior Disorders in
Children with Autism
Tina D'Alessandro

Predicting Cardiovascular
Disease Risk in African
American Women: Framingham
versus Reynolds Risk Scoring
Preeti Noronha

Psychological Work Place
Violence and Depression Rates
in Nurses
Callie Ellen Vincent

Bridging Cultural Disparities:
From Practice to Research
Eugenial Millender

Gender, Deployment Length and
Combat-Related PTSD
Lisa Marie Sternke

Use of Complementary and
Alternative Therapies for Pain
Management in Minority Adults
Jolin Nguyen

Gaps in Understanding the
Experiences of Young Carers of
Mentally Ill Parents
Brandy Mechling

Identifying Barriers to Mental
Health Services for Latino
Women in Rural Areas
Jessica C. Vargas

Evaluation of the Efficacy of the
Expansion of Behavioral Health
Services in a Rural Primary Care
Clinic
Carolyn Donovan

Understanding Health Literacy in
Instrumentation Contexts
Karen Andrea Armstrong

SNRS Student Posters Friday, February 13, 2009

Preliminary Findings: The Lived Experience of Men Who Have Used Violence in Their Intimate Relationships and Who Have also Used Alcohol or Other Drugs

Christina Wei

Ethnic Differences in Menopause Research Participation

Lisa Marie Cleveland

Low-income Minority First-time Mothers Infant Care Problems: Effects of APN Interventions.

Jean Hannan

Prostate Cancer Among African American Men in Coastal Georgia

Cheryl L. Robinson

Violence Against Mexican-American Women: Synthesis of the Literature and Research Implications

Melanie Fleur Kempf

Gestational Diabetes Mellitus: Using Black and White Evidence to Address Health Disparities

Johanna Phillips Kelly

Effects of Patient and Family Health Literacy on Heart Failure Knowledge and Self Management

James Daniel Holland

The Association of Depressive Symptoms and Inflammatory Markers Among Economically Disadvantaged Women Aged 50 Years and Older Diagnosed with Acute Coronary Syndrome: New Knowledge for Nursing Practice

Gayle McGlory

Symptoms Experienced in Patients Treated with Ultrafiltration in Acute Heart Failure

Deborah Ann Lekan

Integrated Review of Family Planning within Hispanic Couples

Yui Matsuda

Effects of Allogeneic Stem Cell Transplantation (ASCT) on the Oral Microbiome

Nancy J. Ames

Cervical Cancer in Hispanic Women

Martha Ofelia Rojo

Call Bell Requests, Call Bell Response Time and Patient Satisfaction

Sheila Serr Roszell

Nonnutritive Sucking and Sucrose-Induced Analgesia: Effect on Heart Rate, Oxygen Saturation, and Pain in Intubated Infants

Harriet Dean Miller

Framing Inter-Professional Research in Patient Safety

Katherine McDuffie

"Isn't Mucositis the Least of My Worries?"

Jessica Keim

Nurses' Experience of Living with Adverse Outcomes of Hazardous Drug Exposure

Martha Polovich

Molecular Diagnosis of Hereditary Neurological Disease in Mali, West Africa

Katherine Gloria Meilleur

Critical Review: Anesthetic Immunomodulation in Surgical Breast Oncology Patients

Kristen Starnes-Ott

Pediatric Nurses' Journeys of Caring to Relieve Children's Post-operative Pain: A Triangulation Mixed Methods Pilot Study

Renee Manworren

Intra-operative Pressure-Related Tissue Injury in Patients with Severe Obesity: A Systematic Review of Pressure Ulcer and Bariatric Surgery Literature

Helen Bernadette Zuelzer

Respiratory Muscle Function, Ventilator Weaning Outcome, and Glucose Level in Adult Patients Supported by Mechanical Ventilation

Liz Sturgeon

Psychometric Evaluation of Elllison's Spiritual Well-Being Scale

Marilyn Denise McNeill

SNRS Student Posters Saturday, February 14, 2009



The Concept of Nursing Workload: A Dimensional Analysis

Heather Lee Craven

Nurses' Perceptions of the Influence of Social Support on Intent to Turnover: A Mixed-Methods Study.

Beverly Jean Myers

The Pre-analysis of Customized TeamSTEPPS(c) Training in the Pediatric and Surgical Intensive Care Units of an Academic Healthcare System

Wei-Ting Lin

Should I Stay or Should I Go: Predicting the Departure and Retention of Baccalaureate Prepared Graduate Nurses Participating in a Twelve-Month Nurse Residency Program

Rosemary A. Pine

The Relationship of Safety Culture and Patient Outcomes in Academic Health Science Centers

Amy Fagan

Individual and Organizational Factors that Predict Workplace Incivility: Impact on Cost, Absenteeism, and Productivity

Patricia Lewis

Nurses' Generational Differences

Amy M. Sparks

Neighborhood Level Risk Factors for the Development of Obesity

Amanda Taylor Fallin

Health Literacy Expectation of Weight Loss Materials

Catherine Gaines Ling

Acquaintance Rape Prevention Programs for Female College Students: A Review of the Literature

Kristin Vander Ende

Prevalence of Waterpipe Use and Other Substance use among College Students

Devon Noonan

"Leaving the Comfort of the Familiar"

Cherie A. Smith-Miller

Differences in Emotional Well-Being for Hurricane Survivors: A Secondary Analysis of the ABC Hurricane Katrina Poll

Margaret R. Rateau

Respectful Listening: Connecting Theory to Practice

Bonnie Pope

Examining HIV Risk and Partner Violence in Cebu, Philippines

Marguerite L. Baty

From Kaiserswerth to Baltimore: The Diaspora of German Ideas to Establish Deaconess Nurses in the Community 1890-1913

Lisa Martha Zerull

Using Theater to Facilitate Discussion on Community Health Issues: Nutrition and Sanitation: A Pilot Study

Cecilia Venzon

Do Enclosed Smoking Areas Protect Nonsmokers and Workers?

Brendan Gregory Zahn

Culturally Competent Systematic Review: Palliative Care Research in Developing Countries

Rachel Klimmek

Radon Knowledge, Beliefs, and Risk-Reduction Behaviors

Gwendolyn Hayes Rinker

In Bad Hands: Intimate Partner Violence in Adolescence

Risa Turetsky

The RN's Estimation of Height and Weight in Acutely Ill Patients

Deborah Welsh

Early Health-Related Quality of Life Outcomes after a Mild Traumatic Brain Injury from Child and Proxy Perspectives

Pam Pieper

Diabetes Group Visits: A Systematic Review

Jennifer A. Veshnesky

The American Migraine: An Analysis of the 2006 National Health Interview Survey

Anthony Ray Ramsey

SNRS Student Posters Saturday, February 14, 2009

Vaginal Estrogen Use in Menopause: Is it Safe?

Catherine M. Greenblum

Evaluating the Efficacy of a Protocol for Premedication for Semi-Urgent Intubation of Neonates in the Newborn Intensive Care Unit

Judith Dunmire Polak

Appraisal of Extraordinary Care: State of the Science

Vera Barton-Caro

Frequency and Efficacy of Nutritional Evaluation in Critically Ill Adults Receiving Mechanical Ventilation

Maggie Roberts

Spirituality as a Tool to Aid in Recovery post Myocardial Infarction

Christy Berding

Resting Energy Expenditure and Nutritional Adequacy in Patients Receiving Mechanical Ventilation

Jessie Bafford

The State of the Science of Animal-Assisted Therapy

Ann Horigan

Intervention Fidelity: Does a Reliable Instrument Determine Fidelity in Field Notes?

Jo Dowell

Prevention of Adverse Drug Events (ADEs) after Implementing Warfarin Anticoagulation Therapy - A Pilot Test

Chang-Chiao Hung

Effect of Fitness on Metabolic Syndrome Markers, HRV and Inflammation in Obese African American Youth

Belinda Fleming

Is Patient Inactivity Related to Delay in Discharge or Length of Stay?

Lenora W. Smith

Published Uses of the Practice Environment Scale of the Nurse Work Index (PES-NWI)

Nora E. Warshawsky

Intervention Fidelity: Learning Application through a Mentored Nurse Research Experience

Deborah H. Allen

Psychometric Properties of the Revised Gerotranscendence Scale

Rachel Cozart

Assessing and Reporting Inter-rater Agreement in Behavioral Observation Research

Jinhee Park

The Psychometric Properties of the Brief Symptom Inventory Depression and Anxiety Subscales in Heart Failure Patients with and without Renal Dysfunction

Amani Anwar Khalil

Psychometric Properties of the Crandell Cognitions Inventory (CCI)

Lori Mutiso

Perceptions of Latino Migrant Farmworkers' Health and Health Needs in Southwest Georgia

Eleanor McNeill Moore

I Am A Good Person. The Lived Experience of Adult Patients with bipolar Disorder and Comorbid Substance use Disorder

Terry Dionne Ward

The Lived Experience of the Older Registered Nurse Working at the Bedside in the Critical Care Unit

Mary Alice Hodge

Surviving Postpartum Depression and Choosing to be a Mother

Tamara Rogers Dennis

Healthcare Experiences of Zabbaleen Women in Cairo, Egypt

Andrea Knopp

Phenomenological Interviews with Children

Regena Spratling

Fostering Hope in Family Caregivers of Patients with Cancer

Jacqueline Staal

SNRS Student Posters Saturday, February 14, 2009



Making a Snowball in Florida: Lessons Learned During Participant Recruitment for a Community-based Phenomenological Study

Laurie L. Stark

Puebla, Mexico: Nursing, Job Satisfaction and Migration

Rebecca M. Wheeler

Reality Shock Revisited: Returning to the Bedside

Joyce P. Burr

Qualitative Findings from the Domestic Violence Enhanced Home Visitation Program (DOVE)

Jeanne Alhusen

First Time Adolescent Mothers: Factors Affecting Decision Making Impacting Future Conception

Donna Campbell

Because We Don't Take Care of Ourselves: Southern Rural Black Women's Explanatory Models of Cardiovascular Disease

Laura K. Evans

Women's Perceptions of Menstrual Cycle Symptoms

Jessica Shari Holmes

The Emergence of the MD-to-Nurse Phenomenon

Liwliwa Villagomez

Aesthetic Inquiry: An Emerging Qualitative Method

Valentina S. Lucas

Nurses' Perceptions of People who are Homeless

Lora Crowe

SNRS General Posters Thursday, February 12, 2009

How Older Adults "Become" Volunteers: A Grounded Theory Study

Janet Brown, PhD

Cancer Screening Behavior of CCRC Residents

Ann Scheve, MS

The Effect of an Undergraduate Gerontology Nursing Course on Nursing Students' Attitudes and Knowledge about Older Adults

Cathy Abell

Systematic Literature Review of Non-pharmacological Interventions for

Neuropsychiatric Symptoms in Advanced Dementia

Karan Kverno, PhD, CRNP-PMH

Feasibility of a Telemedicine Intervention for Urinary Symptoms in Heart Failure Patients

Shelley Hawkins, DSN, FNP-BC, GNP-BC, FAANP

Performance of Second Degree Nursing Graduates

Marilyn Oermann, PhD, RN, FAAN, ANEF

Comparison of Graduate Research Grades between Student with and without an Undergraduate Research Course

Barbara Davis, PhD, RN

A Dimensional Analysis of Marginalization

Lucy Megginson, PhD

Examining the Relationship Between Participation in Simulation and the Levels of Self-efficacy Reported by Nursing Students

Gwen Leigh, DNP, MSN, BSN

A Survey Evaluation of a Pilot Voluntary Near Miss Reporting System

Ruth Thomas, MSN

Identification of Strategies to Entice Registered Nurses to Teach in Academia

Wanda Lawrence, PhD



Integrating Teaching Strategies to Enhance Critical Thinking
 Janice Hoffman, PhD, RN, CCRN

Measuring Stroke Risk in Older Adults
 Ellen Jones, NP, APRN, RN

Motivational Interviewing and Behavior Change in Persons with Type 2 Diabetes: A Literature Review
 Diane Chlebowy, PhD, RN

Health Literacy Knowledge and Perceptions Among College Students
 Brenda Matzke, PhD

Value-added Risk Assessment: The Family Health History
 Jennifer Cook, PhD

Postoperative Nursing Care for the Patient with Esophageal Cancer Relates to the Incidence of Atrial Fibrillation
 Masayo Ayukawa, MSN, RN

A Comparative Study of Weight Trends in Head Start Preschoolers
 Bonnie Harbaugh, PhD, RN

Physician and Nurse Providers' Experience in Pediatric Palliative Care (PPC) Referrals and Pain Management for Children with Life Limiting Conditions (LLC)
 Veronica Feeg, PhD

Parents' Reflections on the Quality of the Dying and Death of their Children in Pediatric Intensive Care
 Diane Yorke, MSN, CPNP, RN

Pediatric Death and Emergency Service Personnel
 Julie Lindsay, MSN

Maternal Relaxation Response During Skin-to-Skin Contact: A Feasibility Pilot Study
 Sheau-Huey Chiu, PhD, RN

Hospital to Home Transition Experience of Mothers of a Preterm Infant
 Junyane Griffin, PhD

Effects of Music Therapy on Preterm Infants in the Neonatal Intensive Care Unit
 Ashley Wood, PhD, WHNP-BC

Underserved Population: Rural Mexican American Families of Children Who Have Asthma
 Sharon Horner, PhD

Prenatal Diagnoses of Lethal or Life-threatening Fetal Anomalies and Difficult Decision-making in Late Adolescence/Early Adulthood
 Beth Black, PhD, RN

A Comparison of Maternal Competency among Low-Income Mothers
 Debra Copeland, DSN, RN

Family Members' Perceptions of Sibling Relationships after a Major Pediatric Burn Injury
 Carlee Lehna, PhD

The American Nursing Foundation: 53 Years of Advancing Nursing Science
 Patricia R. Messmer, PhD, RN-BC, FAAN

Ambient Temperature Modulation of Cardiovascular Responses to Intermittent Hypoxia in Rats
 Pamela Johnson Rowsey, PhD

Feasibility and Acceptability of an Internet-Based Headache Diary
 Margaret Moloney, PhD, ANP-CS, RN

Preliminary Findings of a Pilot Study Exploring Cytokines and Fatigue in Women with Breast Cancer
 Barbara Raudonis, PhD

Perceptions of the Community Health Worker Role from Rural and Urban African American Elders
 Jennifer Wenzel, PhD, RN, CCM

Examination of Rural African American Cancer Support and Resource Needs Might be Helpful
 Randy Jones, PhD, RN

Documenting and Describing Community Services in Florida for Depressed Latino Women
 Jeanne Marie Stacciarini, PhD, RN

Determining Indicators of Access to Health Care for Hypertension Control among Korean-Americans
 Hee-Jung Song

Predicting Self-Efficacy Among Hypertensive Korean Americans
 Jongeun Lee, PhD

Living with HIV in the Rural South
 Margaret Miles, PhD, RN

Church-based Health Fairs: A Model for Addressing Health Disparities
 Shelly Bratcher-Porter, PhD, RN, CS

Building Collaborative Interdisciplinary Partnerships to Study Intimate Partner Violence Using Large Data Sets
 Beverly Baliko, PhD, RN

Development, Implementation, and Initial Evaluation of a Weight Management Program for Clients Receiving Mental Health Services in a Rural Setting

Foster Jones, MSN, CRNP

Perceptions of Sexuality among Mexican American Women with Serious Mental Illness
 Rebecca Bonugli, PhD, RN, PMHCNS

Edgar Allan Poe, "The Pit and the Pendulum", and Ventricular Assist Devices
 Cheryl Zambroski, PhD, RN

Postoperative Nursing Care for the Patient with Esophageal Cancer Relates to the Incidence of Atrial Fibrillation
 Masayo Ayukawa, RN, MSN

The Effect of Need for Achievement on Assessment Scores and Motivation in a New Employee Orientation Course for Nurses
 Joan Carlisle, DSN, PNP-BC

Internationally Educated Nurses in Florida: Practice and Patient Outcomes
 Donna Neff, PhD

A Path Analytic Model of Intent to Stay in a Sample of Navy Nurses
 George Zangaro, PhD, RN

An Interview to Determine Heart-healthy Behaviors and Normal Blood Pressure among African American Females at Cuney Homes, a Housing Project in Houston's Third Ward
 Ruth Grubestic, DrPH, APRN, BC

The American Nursing Foundation: 53 Years of Advancing Nursing Science
 Patricia R. Messmer, PhD, RN-BC, FAAN

The Relationship between Body Mass Index, Perceived Stress, and Weight Perceptions among African American Women
 Dorothy L. Coverson, PhD, RN

2009 SNRS Award Winners

SNRS John A. Hartford Foundation Geriatric Research Award

Deborah B. Reed, PhD, MSN, MSPH

SNRS Distinguished Researcher Award

Barbara Smith, PhD, MSN

SNRS Award for Research in Minority Health

Carolyn Jenkins, DrPH, APRN-BC-ADM, RD, LD, FAAN

SNRS General Posters Friday, February 13, 2009

The Metabolic Syndrome Treatment in Relation to Popular Weight Loss Dietary Interventions
Deborah McClelland, MSN, FNP-BC, MPH,
RN Doctoral Candidate

Shaking and Rattling for Weight Control in Children: Creating an Intervention Study through Community-Based Participatory Research
Elizabeth Reifsnider, PhD

Maternal Perspectives of Lifestyle Habits that put Children of Mexican Descent at Risk for Weight Gain
Martina Gallagher, PhD

SNRS General Posters Saturday, February 14, 2009

Hypertension Education and Screening in African American Churches
Kenya Kirkendoll, MSN, MPH

Constructing a Culturally-tailored DVD to Increase Breast Cancer Screening in Vulnerable Populations in the Gulf South
Gloria Giarratano, PhD

Variation in Pediatric Gastroenteritis Admissions among Florida Counties, 1995-2002
Jean Lee, PhD, RN

Pilot Motivational Interview Intervention to Promote Physical Activity and Healthy Eating of Persons with Diabetes Risk
Carolyn Blue, PhD

Smoke-free Policy and College Students' Opinions
Ellen Hahn, DNS, RN

Recognition and Reporting of Post-stroke Depressive Symptoms
N. Jennifer Klinedinst, PhD, MPH, RN

Development and Testing of an Instrument for Elder Abuse Screening
Katherine Plitnick, PhD

Chemotherapy-induced Peripheral Neuropathy and Challenges in its Measurement: A Systematic Review
Elizabeth Hill

Mirror-ing: The Lived Experience of Viewing Self in the Mirror for Terminally Ill Women
Wyona Freysteinson, MSN

Transitions from Harsh and Cluttered Places: The Lived Experiences of Nurses Caring for Dying Patients on a Long Term Acute Care Unit
Sharon Johnson, MSN, RN

Recovery from Traumatic Injury: Trauma Patients' Perceptions of Facilitators and Barriers
Elizabeth Van Horn, PhD, RN, CCRN

A Hard Job Done with Love: Caregiving is Neither a Burden nor a Carga for Hispanic Caregivers
Lyda Arevalo-Flechas, PhD, RN

The American Nursing Foundation: 53 Years of Advancing Nursing Science
Patricia R. Messmer, PhD, RN-BC, FAAN



Exhibitors

2009 Exhibit Hall Schedule

Wednesday, February 11, 2009

8:00 a.m. – 12:00 a.m.
12:00 p.m. – 5:00 p.m.

Decorator Setup
Exhibitor Move-in

Thursday, February 12, 2009

7:30 a.m. – 8:30 a.m.
9:45 a.m. – 10:00 a.m.
12:30 p.m. – 1:30 p.m.
3:00 p.m. – 3:30 p.m.
5:30 p.m.

Continental Breakfast/Exhibits Open
Break/Exhibits Open
Exhibits Open
Break/Exhibits Open
Exhibits Close

Friday, February 13, 2009

7:30 a.m. – 8:30 a.m.
9:30 a.m. – 9:45 a.m.
10:45 a.m. – 11:00 a.m.
12:30 p.m. – 1:45 p.m.
3:30 p.m. – 3:45 p.m.
5:00 p.m.

Continental Breakfast/Exhibits Open
Break/Exhibits Open
Break/Exhibits Open
Exhibits Open
Break/Exhibits Open
Exhibits Close

Saturday, February 14, 2009

7:30 a.m. – 8:30 a.m.
10:00 a.m. – 10:15 a.m.
11:00 a.m. – 1:00 p.m.

Continental Breakfast/Exhibits Open
Break/Exhibits Open
Exhibitor Tear down

Almedtrac, Inc

100 Technology Drive, Pittsburgh, PA 15219
Phone: (412) 770-1630
mwilliamson@almedtrac.com

Study 360 is a web-based software tool created by researchers to systematically address protocol fidelity and study integrity. It can reduce project management time by up to 70% and has been shown to increase grant fundability. Please visit us in the exhibitor hall for more information.

Booth: 29

Fax: (412) 770-1638
www.almedtrac.com

Duke University, School of Nursing

307 Trent Drive, DUMC Box 3322, Durham, NC 27710
Phone: (919) 668-2345
robyn.pierce@duke.edu

The Duke University School of Nursing provides leadership in the health care of people through education, research, and health care delivery. We provide advanced and comprehensive education to prepare students for a lifetime of learning and for careers as leaders, practitioners, or researchers.

Table Top: 9

Fax: (919) 668-4693
www.nursing.duke.edu

Emory University

1520 Clifton Road, NE, Atlanta, GA 30322
Phone: (404) 727-6923
aharrel@emory.edu

Table Top: 11

Fax: (404) 727-0536
www.nurse.emory.edu/phd

Exhibitors



Johns Hopkins University, School of Nursing

525 N. Wolfe St, Baltimore, MD 21205

Phone: (410) 955-7548

dalton@jhu.edu

Johns Hopkins University School of Nursing offers academic preparation for the future leaders in the profession of nursing to practice in national and international settings. Degreeed programs include Baccalaureate, Master's and Doctoral education. Areas of focus include, but are not limited to, Forensic Nursing, Emergency Preparedness/Disaster Response, Nurse Practitioner, MSN/MBA, MSN/MPH, DNP and PhD.

Booth: 24

Fax: (410) 614-7086

www.son.jhmi.edu

Medical College of Georgia, School of Nursing

987 St. Sebastian Way, Augusta, GA 30912

Phone: (706) 721-4738

pcook@mcg.edu

The Medical College of Georgia is the state's health sciences university. The SON is dedicated to the integration of teaching, research, and practice, offering a variety of the highest quality, innovative educational programs to meet your needs. Please visit our exhibit booth and learn more about opportunities at MCG.

Booth: 26

Fax: (706) 721-7390

www.mcg.edu/son

Michigan State University College of Nursing

A218 Life Science Building, Lansing, MI 488424-1317

Phone: (517) 355-6527

deborah.garland@hc.msu.edu

The mission of the College of Nursing at Michigan State University is to enhance the health of the community by providing excellence in nursing education, research and practice to advance the profession of nursing. The college currently enrolls more than 500 undergraduate and graduate students. Its 80 faculty members represent a diverse blend of scholars, teachers, and practitioners who bring real world experience to the classroom.

Booth: 30

Fax: (517) 432-5667

www.nursing.msu.edu

National Institute of Nursing Research

31 Center Drive, Room 5B-10, Bethesda, MD 20892-2178

Phone: (301) 496-0208

barrettmg@mail.nih.gov

The National Institute of Nursing Research (NINR), a component of the National Institutes of Health, supports basic and clinical research that develops the knowledge to build the scientific foundation for clinical practice, prevent disease and disability, manage and eliminate symptoms caused by illness, and enhance end-of-life and palliative care.

Table Top: 15

Fax: (301) 480-8845

www.ninr.nih.gov

Noldus Information Technology

1503 Edwards Ferry Rd., Suite 201, Leesburg, VA 20176

Phone: (703) 771-0440

Paige.roderick@noldus.com

Noldus (www.noldus.com), creator of The Observer XT (the advanced logging tool for the collection and analysis of observational data) offers a wide variety of solutions for the observation, visualization and analysis of human behavior. Please visit our booth for a free demonstration and to see how our solutions can work for you

Table Top: 17

Fax: (703) 771-0441

www.noldus.com

Sigma Theta Tau International

550 W North St., Indianapolis, IN 46202

Phone: (317) 634-8171

sarai@stti.org

The Honor Society of Nursing, Sigma Theta Tau International is a global community of nurse leaders who use knowledge, scholarship and service to improve world health. The organization offers educational resources and networking opportunities to all nurses and the honor society's 130,000 active members, who reside in 86 countries.

Table Top 23

Fax: (317) 634-8188

www.nursingsociety.org

Southern Nursing Research Society

10200 West 44th Ave., Suite 304, Wheat Ridge, CO 80033

Phone: (303) 327-7548

snrs@resourcenter.com

The mission of SNRS is to advance nursing research in the Southern region of the US, the Bahamas and the countries of the Caribbean and Latin America.

Table Top: 8

Fax: (303) 422-8894

www.snrs.org

University of Arkansas for Medical Sciences, College of Nursing

4301 West Markham, #529, Little Rock, AR 72205

Phone: (501) 686-5374

The University of Arkansas for Medical Sciences College of Nursing provides baccalaureate, master's, and PhD programs. The College has faculty actively engaged in faculty practice programs, a Hartford Center of Geriatric Nursing Excellence, an NINR Tailored Biobehavioral Interventions Research Center, and ranked 24th in NIH research funding in 2007.

Table Top: 21

Fax: (501) 686-8350

www.nursing.uams.edu

University of Florida, College of Nursing

Po Box 100197, Gainesville, FL 32010

Phone: (352) 273-6321

ahorgas@ufl.edu

The University of Florida College of Nursing is recognized nationally for innovative education, dynamic programs of research and creative approaches to nursing practice. Offering baccalaureate, master's and doctoral degrees, UF nursing education programs produce leaders, scholars and clinicians who promote quality patient care and influence health policy.

Table Top: 14

Fax: (352) 273-6573

www.con.ufl.edu

University of Kentucky, College of Nursing

315 CON Bldg, 751 Rose St, Lexington, KY 40536-0232

Phone: (859) 323-5108

lahall@uky.edu or megreg3@email.uky.edu

The University of Kentucky College of Nursing offers a full complement of programs, including a traditional BSN, RN-BSN, Second Degree BSN, a new BSN-DNP Option, BSN-PhD Option, DNP and PhD, as well as an active continuing education program. Our goal is to help you realize yours. Visit us at www.mc.uky.edu/nursing.

Booth: 31

Fax: (859) 323-1057

www.mc.uky.edu/nursing

University of Maryland, School of Nursing

655 West Lombard Street, Suite 311, Baltimore, MD 21201

Phone: (410) 706-4122

doerr@son.umaryland.edu

The University of Maryland School of Nursing develops strong leaders who shape the profession of nursing and have a powerful impact on the health care environment. The concepts of leadership, partnership, and innovation are fundamental to all of the School's academic, research, and clinical initiatives.

Booth: 25

Fax: (410) 706-5560

<http://nursing.umaryland.edu/>

University of South Alabama, College of Nursing

USA Springhill Campus, Mobile, AL 36688-0002

Phone: 251-434-341

mmeyer@usouthal.edu

The University of South Alabama College of Nursing is dedicated to the education of professional nurses who provide the highest quality health care to the communities they serve. The practice of nursing is both an art and a science; the focus of nursing is the diagnosis and treatment of human responses to actual or potential health problems. The College of Nursing has two locations. One is on the USA Springhill campus. The other is on the USA Baldwin County campus in downtown Fairhope. The resources of the University, the USA hospitals and

Table Top: 16

Fax: 251-454-3413

www.southalabama.edu/nursing/

Exhibitors

clinics, and numerous clinical agencies provide excellent opportunities for students to acquire the knowledge and skills essential for professional nursing.

University of South Florida, College of Nursing **Table Top: 13**

12901 Bruce B. Downs Blvd, MDC 22, Tampa, FL 33612

Phone: (813) 396-9936

Fax: (813) 974-7930

mparker@health.usf.edu

www.health.usf.edu/nursing

The University of South Florida College of Nursing is a member of USF Health, a collaborative enterprise dedicated to making life better through research, education, and healthcare. We offer a wealth of options including BS, MS, PhD, and DNP programs. For more information, contact us at (813) 396-9936 or www.health.usf.edu/nursing.

University of Texas, Arlington, School of Nursing **Booth: 32**

411 S. Nedderman Drive, Box 19407, Arlington, TX 76019-0407

Phone: (817) 272-5295

jgray@uta.edu

Fax: (817) 272-2950

www.uta.edu/nursing

The PhD in Nursing Program prepares nurse scientists to meet the health needs of a rapidly changing, culturally diverse society through a focus on Clinical Research or Academic Role Development. It shares the School of Nursing mission, preparing quality nurse health care providers through excellence in education, scholarship and service.

West Virginia University, School of Nursing **Booth: 33**

6415 Health Sciences South, PO Box 9600, Morgantown, WV 26506-9600

Phone: (304)-293-1600

swells@hsc.wvu.edu

Fax: (304) 293-2784

www.hsc.wvu.edu/son

The West Virginia University School of Nursing's innovative educational offerings include live, interactive, online delivery of the Master of Science in Nursing and Doctor of Nursing Practice programs. Students participate in class from anywhere in the world. Our unique summer-residency program for the PhD in nursing is ideal for nurse educators.

Join us for the
SNRS 24th Annual Conference:
“Health Care Challenges
of the Next Decade”

February 2 - 6, 2010

Hilton Austin • Austin, Texas



Our Goal Is to Help You Realize Yours

Outstanding academic career opportunities!

The College continues its climb in rankings and is tied for 26th in the *U.S. News & World Report* 2008 edition of America's Best Graduate Schools.

Just one of our areas of expertise is the University of Kentucky College of Nursing Center for Biobehavioral Research in Self-Management of Cardiopulmonary Disease, funded by the National Institute of Nursing Research (2007-2012), which supports faculty in the development of expertise in biobehavioral cardiopulmonary research focused on self-management of chronic illness.

Faculty opportunities include:

- **Undergraduate Tenure Track**, with 50 percent time for research
- **Pediatric Advanced Practice Nursing**; includes graduate track coordination
- **Psychiatric/Mental Health Advanced Practice Nursing**; includes graduate track coordination

For position descriptions and application instructions:

www.mc.uky.edu/nursing/jobops/jobops.htm



UK HealthCare positions:

Staff Development Specialist, Pediatric Critical Care (position number NR524645) and **R.N. positions** at UK HealthCare-Samaritan.

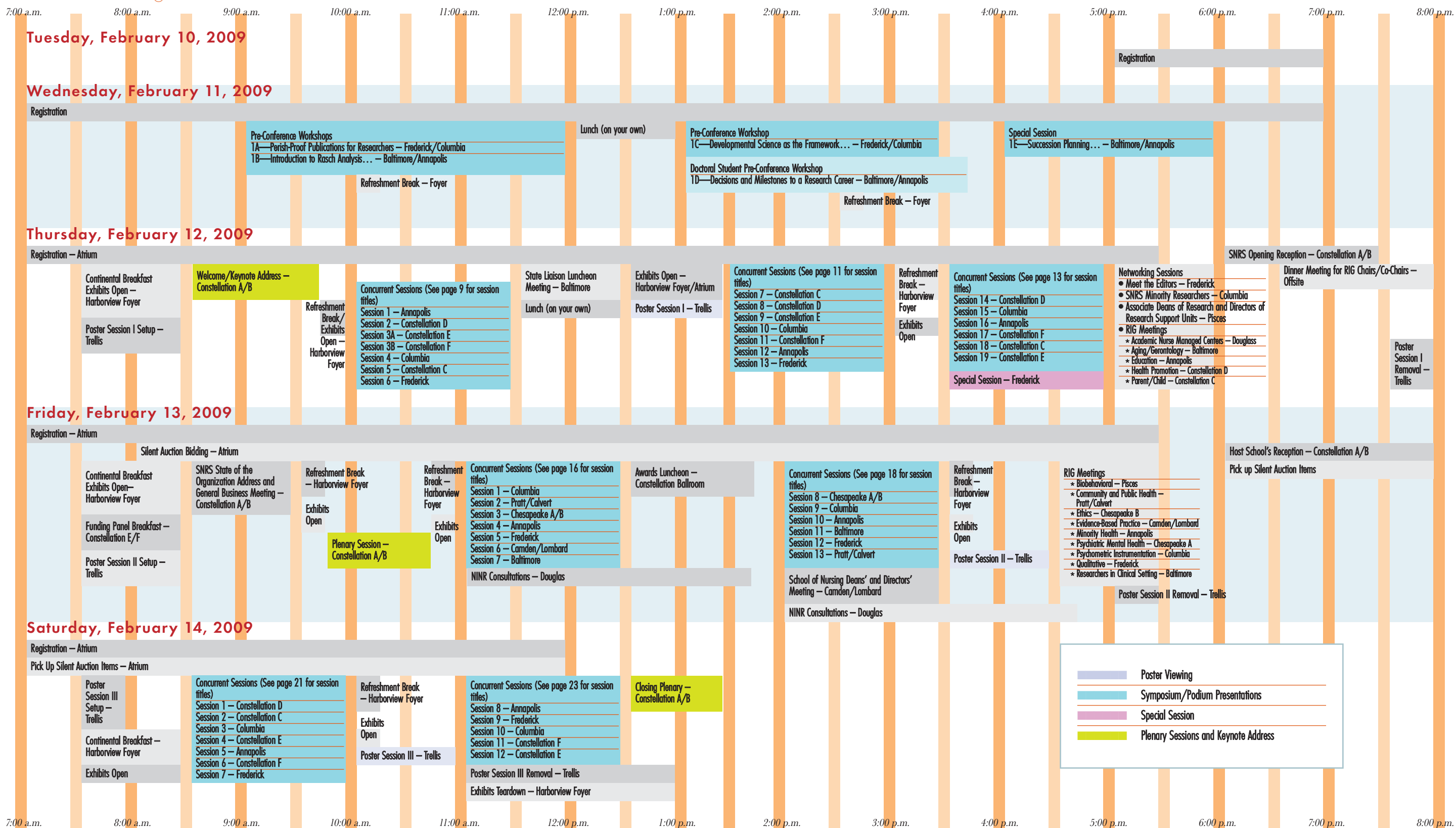
Apply at www.uky.edu/hr/ukjobs, using position number above.



The University of Kentucky is an equal opportunity employer and encourages applications from minorities and women. If offered a position, you will be required to pass a pre-employment drug screen and a pre-employment national background check as mandated by University of Kentucky Human Resources. The University of Kentucky is responsive to the needs of dual-career couples.



Schedule at a glance



Legend:

- Poster Viewing
- Symposium/Podium Presentations
- Special Session
- Plenary Sessions and Keynote Address